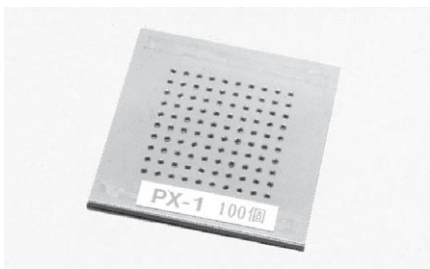
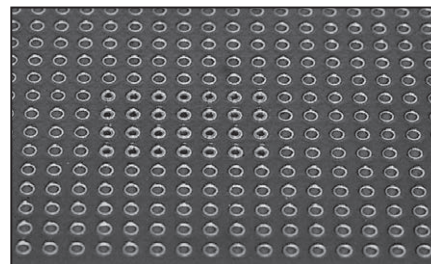


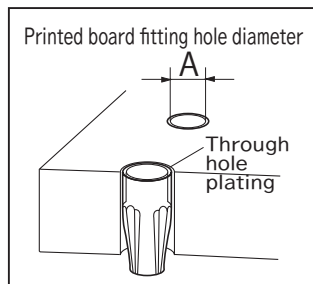
Press-fitting type socket pin

Part No.: **PX series** (100pcs/pack)

- This socket pin can be used just by press-fitting without soldering.
- After press-fitting, it becomes the same height as the flat surface of the PC board.
- This is used as the socket for parts and the socket for directly inserting the electric wire.
- PX-1 can be also used on the socket side of a jumper pin (JX series).
- Material: Beryllium copper
- Finish: Gold plating over nickel base
- Adaptive printed board thickness: t1.6 or over

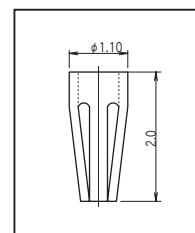


- PX-1 is stored in the case as shown in the above picture, take it out by inserting the press-fitting tool and press-fit to the printed board hole.

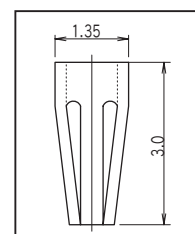


Part No.	PX-1	PX-1.3	PX-1.6
A: Printed board fitting hole diameter	φ 1.03 to φ 1.07	φ 1.21 to φ 1.25	φ 1.51 to φ 1.55
Adaptive male pin diameter	φ 0.45 to φ 0.6	φ 0.6 to φ 0.8	φ 0.9 to φ 1.1
Rated current	1A	4A	6A
Contact resistance	15m Ω or less	15m Ω or less	15m Ω or less
Package	Case	Bulk	Bulk

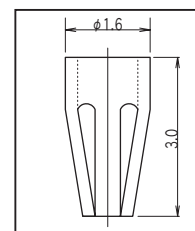
- Please be sure to keep the "A: Printed board fitting hole diameter".
- Please contact us for mounting it to a metal.
- Please perform a press-fit test before use.



PX-1



PX-1.3



PX-1.6

PX series press-fitting tool

Part No.: **PX- □ -PR series**

Tool

- This is a tool for press-fitting PX- □ .
- Turn the part A and adjust the strength of the spring according to the PC board through hole size.

Part No.	Selected products
PX-1-PR	PX-1
PX-1.3-PR	PX-1.3
PX-1.6-PR	PX-1.6



■ Instructions for use

Please confirm that PX- □ is not protruded in the printed board TH.

■ In case of the edge is broken, we can sell the edge part from 1piece.

Part No.: PX-1-PR edge chip

Part No.: PX-1.3-PR edge chip

Part No.: PX-1.6-PR edge chip