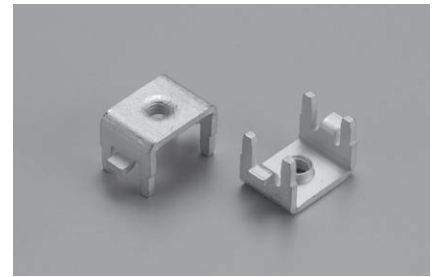


Power supply terminal for surface mounting (For M3)

PVT-3-A

- This is used for supplying power to PC board.
- Please fit a crimping terminal at the edge of electric wire and tighten it with a M3 screw.
- Rated current is larger than PV-3 (Surface mounting type).
- Tensile strength and torsional strength is stronger than PV-3.
- Material: Copper
- Finish: Tin plating over nickel base
- Rated current: 40A

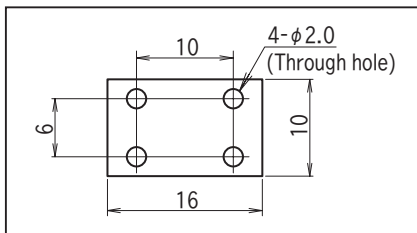


Part No.

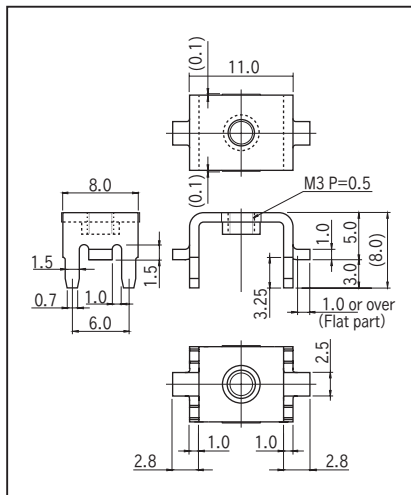
Part No.	Package
PVT-3-A	Bulk (100pcs/pack)
PVT-3-A-T	Reel (600pcs/reel)

Adsorption film is put on the screw head part of PVT-3-A-T. Please remove the film after reflow.

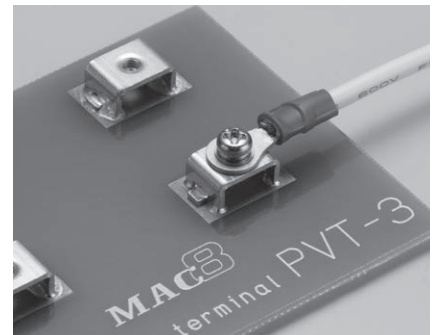
Recommended land information



Dimension



Example of usage



Recommended metal mask thickness

150 μm to 200 μm

Tightening torque

6 kgf-cm (58.8N-cm) or less

Dimension of the reel

