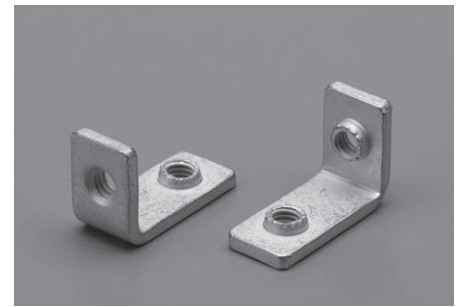


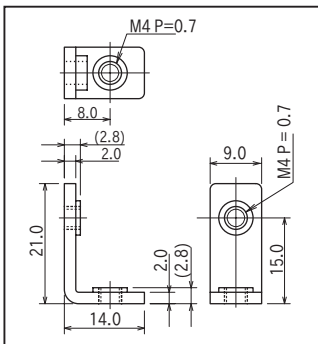
Printed circuit board fitting clasp

BDA-15-M4 (10pcs/pack)

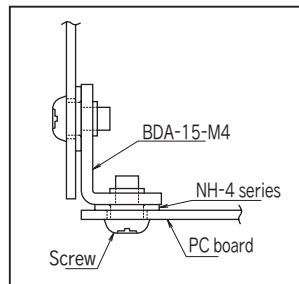
- Use this item for fitting the printed circuit boards vertically.
- Besides of fitting the PCBs, this item also has electrical function (Recommended to use with NH series).
- Material: Copper
- Finish: Tin plating over nickel base
- Rated current: 40A



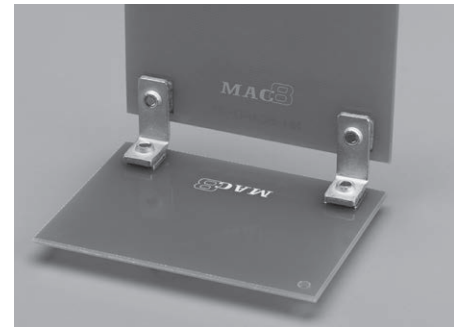
■ Dimension



■ Example of usage



When using with NH-4



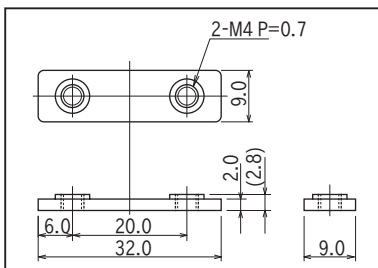
Printed circuit board fitting clasp

BDB-20-M4 (10pcs/pack)

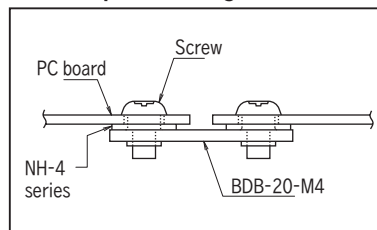
- Use this item for fitting the printed circuit boards horizontally.
- Besides of fitting the PCBs, this item also has electrical function (Recommended to use with NH series).
- Material: Copper
- Finish: Tin plating over nickel base
- Rated current: 40A



■ Dimension



■ Example of usage



When using with NH-4

