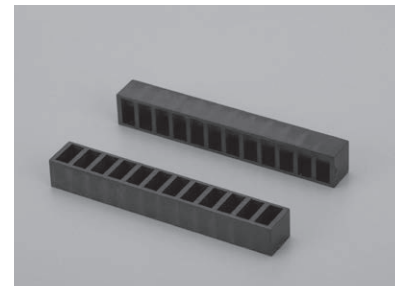
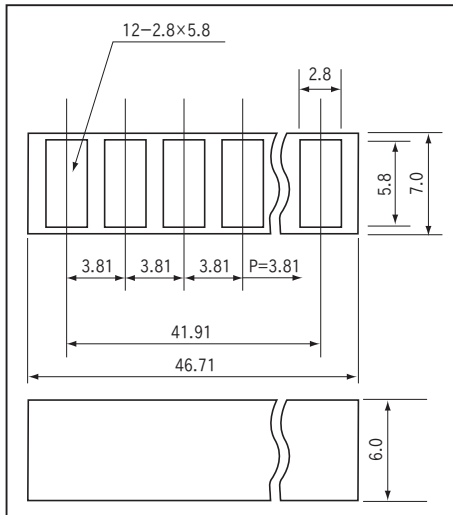


Mounting plate for SMT LED light shielding

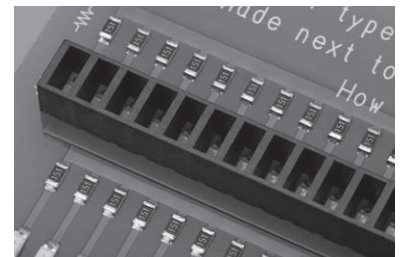
Part No.: **LDM-3-6**

- This part can block out next to each other SMT LED light.
- There are 2 methods to fix the part to the cable.
 - Fix by adhesive. Use the fixing clasp. (Part No. LDM-6-F)
- This part is not designed with considering the heat of LED.
- LED fixing pitch...3.81mm
- Material...PPS resin black (UL94V-0)
- Operating temperature range
 -- 40 to + 125°C

Dimension



Example of usage



In case of using adhesive

How to order (10pcs/pack)

LDM-3-6- □ P



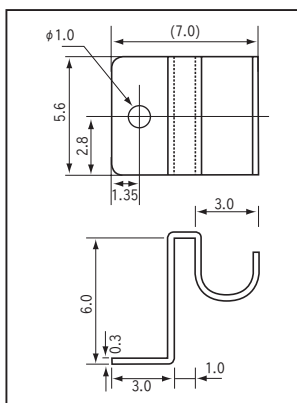
Please fill in the number of poles. (Maximum number 12P)

- In case of using fixing clasp. LED can not be used at both sides because the fixing clasp will be inserted. (When placing 12 pin type, LED can be fixed 10 pcs.)
- **Fixing clasp (Part No. LDM-6-F) (10pcs/pack)**
 - Please push the clasp into the window
 - solder the clasp, and fix
 - Material...Phosphor bronze
 - Finish...Tin plating over nickel base

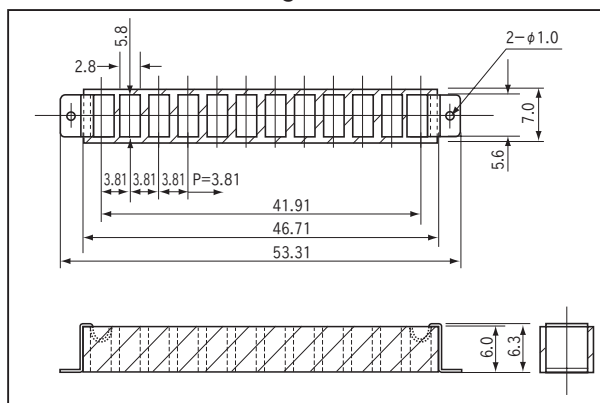


LDM-6-F

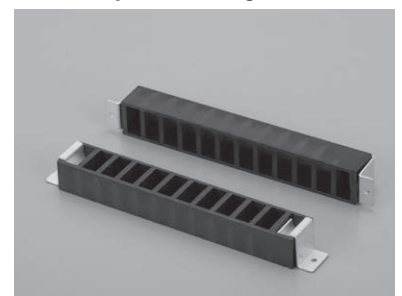
Dimension



Installation drawing

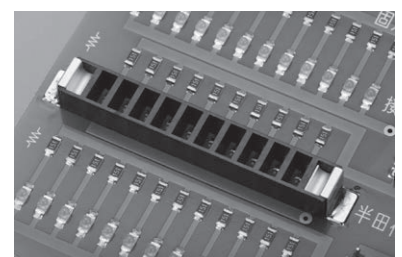
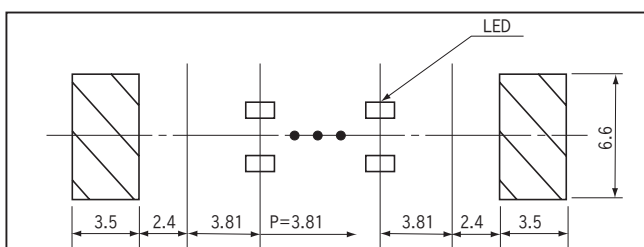


Example of usage



With fixing clasp

Recommended land information



Fixing clasp with soldering