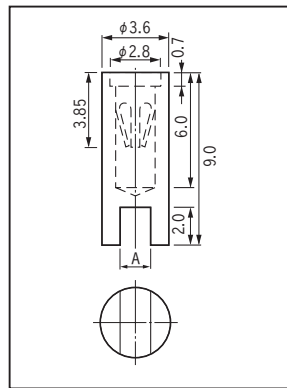


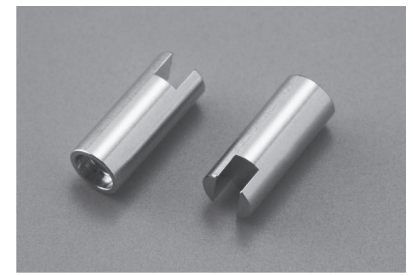
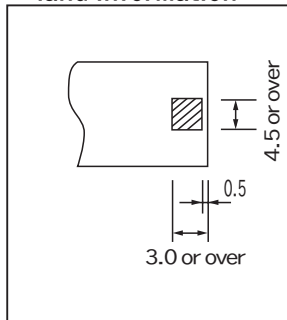
**Socket for inserting to a PC board in the horizontal direction**

**SD series (100 pcs / pack)**

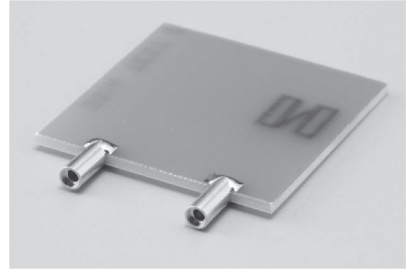
- This is inserted to the side of a PC board to solder the pattern and the socket.
- By combining with SDO series described below, PC board can be insertion / removal in parallel.
- Two types of the adaptive PC board thickness, t1.0 and t1.6, are available.
- Material
  - Body: Brass
  - Contact: Beryllium copper
- Finish
  - Contact part: Gold plating over nickel base
  - Body G: Gold plating over nickel base
  - S: Tin plating over nickel base
- Rated current: 15A
- Contact resistance: 10m Ω or less
- Insertion / removal durability: 100 cycles
- Insertion / removal force: 100g or over
- Operating temperature range: - 40 to + 125°C



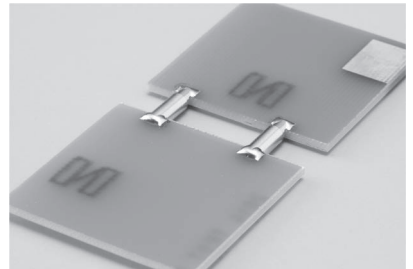
**Recommended land information**



**Example of usage**



**Example of usage**



Combination of SD series and SDO series

**Part No.**

Part no	A	Adaptive printed board thickness	Finish (body part)
SD-15-9-1.0-G	1.1	1.0	Gold plating over nickel base
SD-15-9-1.0-S	1.1	1.0	Tin plating over nickel base
SD-15-9-1.6-G	1.7	1.6	Gold plating over nickel base
SD-15-9-1.6-S	1.7	1.6	Tin plating over nickel base

**Pin for inserting to a PC board in the horizontal direction**

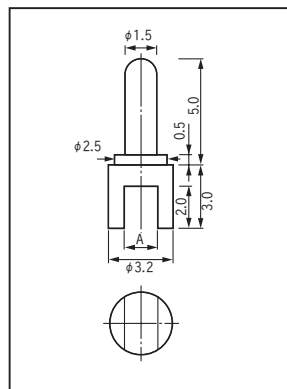
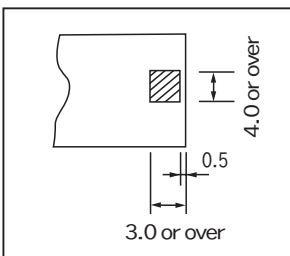
**SDO series (100pcs/pack)**

- This is inserted to the side of a PC board to solder the pattern and the pin.
- By inserting to SD series described above, PC board can be insertion / removal in parallel.
- Material: Brass
- Finish: Gold plating over nickel base
- Rated current: 15A

**Part No.**

Part No.	A	Adaptive printed board thickness
SDO-15-5-1.0	1.1	1.0
SDO-15-5-1.6	1.7	1.6

**Recommended land information**



**Example of usage**

