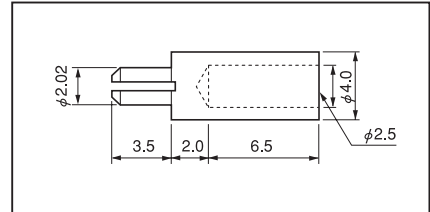


**Test point for power supply voltage check**

Part No.: **TC-1-1** (1000pcs/pack)

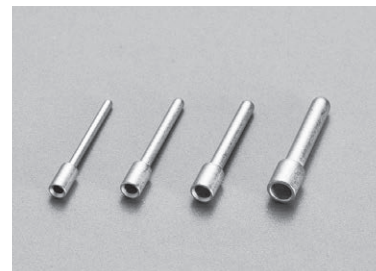
- It is possible to insert the tester bar into the terminal.
- Please use this for checking the power supply voltage etc.
- Press-fitting type, fitting hole diameter:  $\phi$  2.0
- Material: Brass
- Finish: Gold plating over nickel base
- Another lineup (Part No. : TC-1-1 with tap) is with M3 threaded inside.



**Pin for leg extension**

**QE series** (100pcs/pack)

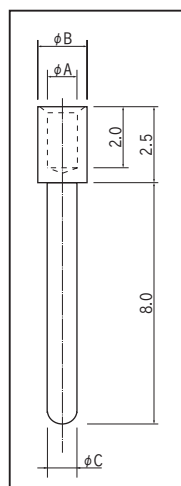
- In the case that the leg of the lead part is too short for soldering on a thick PC board, you can fit the lead part by using this product.
- Please solder and fix this product on a thick PC board (7 mm or less). Then, please insert the lead part and solder it.
- Material: Brass
- Finish: Tin plating over nickel base



**Part No.**

Part No.	A	B	C	Printed board fitting hole diameter
QE-8-07	0.8	1.4	0.7	$\phi$ 0.8
QE-8-09	1.0	1.6	0.9	$\phi$ 1.0
QE-8-11	1.2	1.8	1.1	$\phi$ 1.2
QE-8-15	1.6	2.2	1.5	$\phi$ 1.6

- As the QE-8-07 has a small wire diameter and it is long, it may be bent in some cases. Please note that in advance.



**Example of usage**

