

**Metal fitting for PC board**

**BG series (100pcs/pack)**

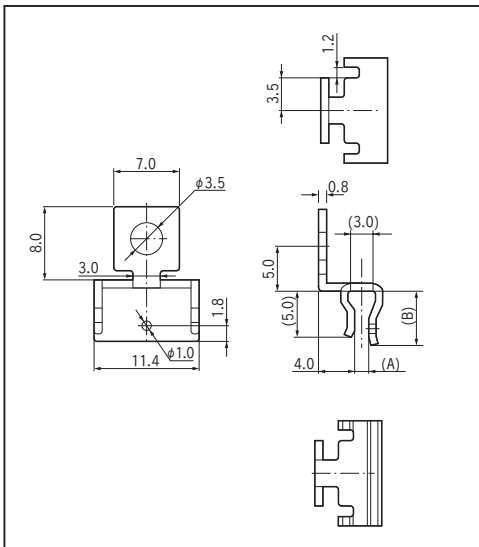
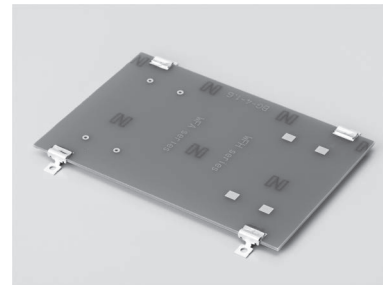
- This metal fitting can be soldered and fixed to a PC board.
- This product can be fit in, soldered and fixed to a surface mounting board, aluminum board, ceramic board or other board for which drilling is not suitable.
- This can be also used for installing a GND line down to a chassis.
- This is raised from a chassis by 4 mm.
- Three types with the adaptive PC board thickness of t0.6, t1.0 and t1.6 are available.
- Material: Phosphor bronze
- Finish: Tin plating over nickel base
- Power capacity: 20A

■ Part No.

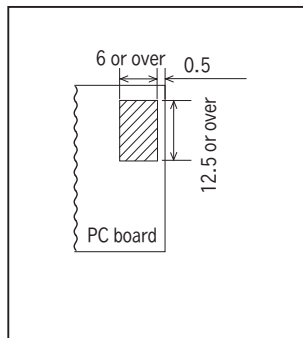
| Part No. | Adaptive printed board thickness | (A) | (B) |
|----------|----------------------------------|-----|-----|
| BG-4-0.6 | 0.6                              | 0.5 | 5.0 |
| BG-4-1.0 | 1.0                              | 0.9 | 5.5 |
| BG-4-1.6 | 1.6                              | 1.5 | 5.9 |



■ Example of usage

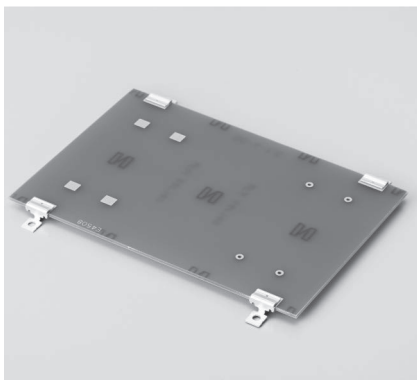


■ Recommended land information

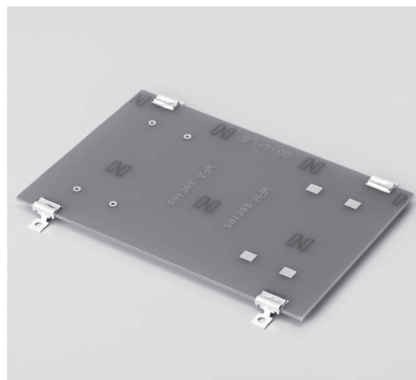


Please fit a land to the both sides.

■ How to use



Fit in BG series.



Solder both the part face and the soldering face.

■ Chassis fitting hole position (for reference)

