

LED socket (for SMT)

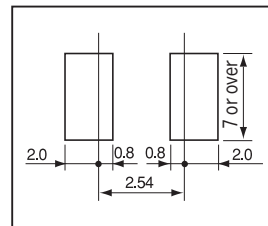
LQS-1, LQS-45, LQS-75 (10pcs/pack)

- This socket for surface mounting is used for insertion an LED of ϕ 3 or ϕ 5.
- LQS-45 is tilted at 45 degrees and LQS-75 is tilted at 75degrees.
- Material
 Resin part: PPS black (UL94-0)
 Socket part Body: Brass
 Contact: Beryllium copper
 Finish: Gold plating over nickel base
- Rated current: 3A (LQS-1, LQS-45, LQS-75)
 1A (LQS-1-0.5, LQS-45-0.5)
- Contact resistance: 10 m Ω or less
- Insulation resistance: 500 M Ω or over
- Withstand voltage: 1000V AC, DC per minute
- Insertion / removal durability : 100 cycles
- Insertion / removal forces: 140g or over
- Reflow: Can be used
- Operating temperature range: - 40 to + 125 $^{\circ}$ C

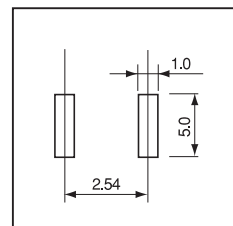
Part No. (10pcs/pack)

| Part No. | Adaptive male pin diameterr |
|------------|---|
| LQS-1 | \square 0.5, \square 0.64, ϕ 0.6 to ϕ 0.8 |
| LQS-1-0.5 | ϕ 0.45 to ϕ 0.6 |
| LQS-45 | \square 0.5, \square 0.64, ϕ 0.6 to ϕ 0.8 |
| LQS-45-0.5 | ϕ 0.45 to ϕ 0.6 |
| LQS-75 | \square 0.5, \square 0.64, ϕ 0.6 to ϕ 0.8 |

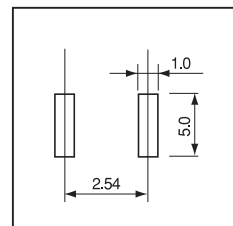
Recommended land information



LQS-1
LQS-1-0.5



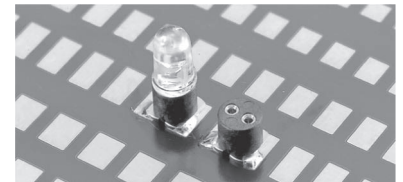
LQS-45
LQS-45-0.5



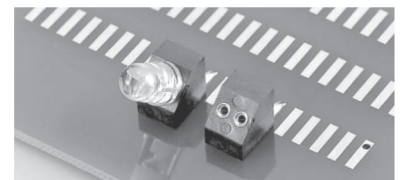
LQS-75



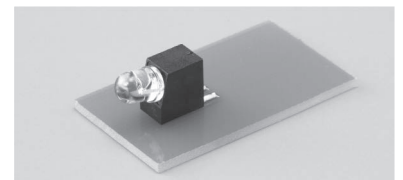
Example of usage



LQS-1

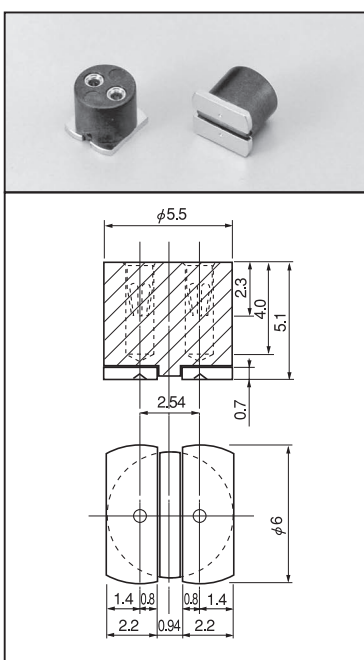


LQS-45

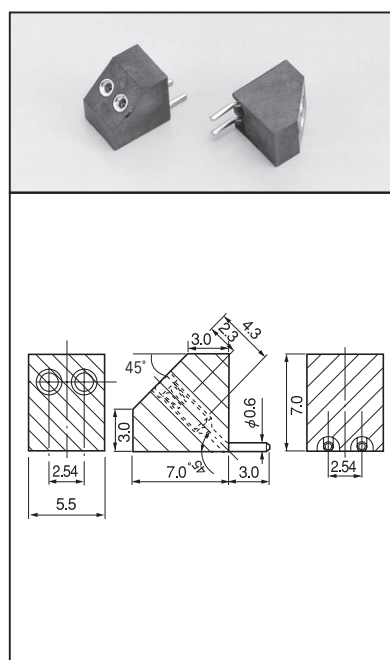


LQS-75

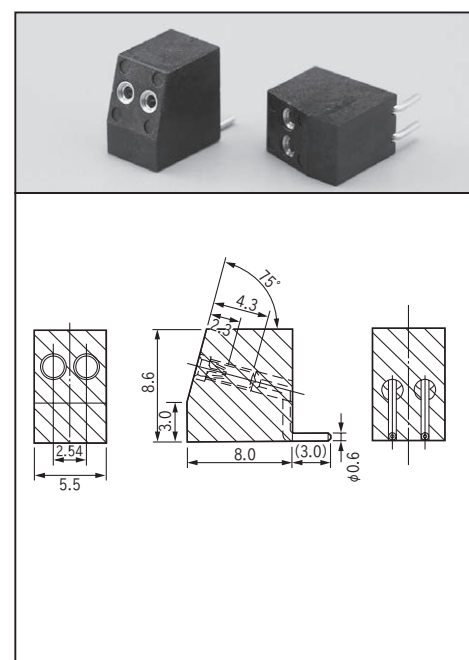
Dimension



Part No.: LQS-1
LQS-1-0.5



Part No.: LQS-45
LQS-45-0.5



Part No.: LQS-75