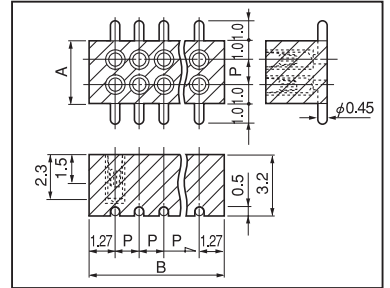
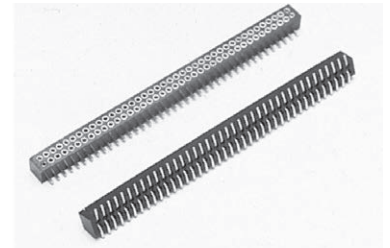
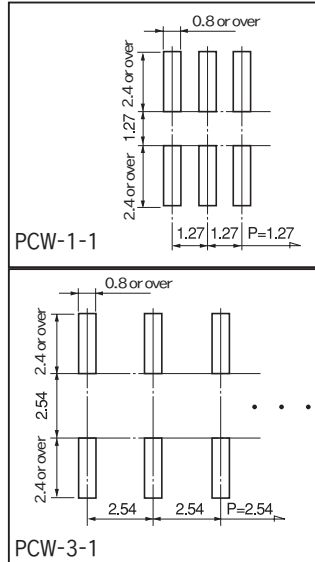


Vertical type connection socket for surface mounting [two-row type]

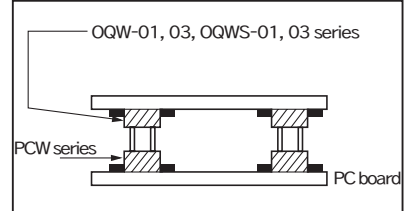
PCW series (10pcs/pack)

- This socket is a two-row type for surface mounting.
- This is available with a pitch of 1.27 mm and 2.54 mm.
- We will deliver by the desired number of poles.
- By combining with OQW-01 or OQWS-01 series, PC boards can be mounted by two-tiered installation.
- Material
 - Socket part Body: Brass
 - Contact part: Beryllium copper
 - Resin part: PCT black (UL94V-0)
- Finish
 - Socket part Body: Tin plating over nickel base
 - Contact part: Gold plating over nickel base
- Reflow can be used for this type.
- Specification
 - Rated current: 1A
 - Rated voltage: 125V AC, DC
 - Withstand voltage: 1000V AC, DC per minute (PCW-3-1)
700V AC, DC per minute (PCW-1-1)
 - Insulation resistance: 500M Ω or over
 - Contact resistance: 10m Ω or less
 - Insertion / removal durability : 100 cycles
 - Insertion forces: 30g or over (per pin)
 - Removal forces: 30g or over (per pin)
 - Adaptive male pin diameter: φ 0.35 to φ 0.47
 - Operating temperature range: - 40 to + 125°C

Recommended land information



Example of usage



How to order
PCW-1-1-10PW

↑ Please fill in the number of poles on one side.
(If the number is not specified, we will deliver by the maximum number of poles.)

Part no	A	B	P	Maximum number of sockets connected
PCW-1-1	3.27	52.07	1.27	40 x 2
PCW-3-1	4.54	50.8	2.54	20 x 2

Instructions for mounting

In the case that a warpage occurs on the resin part during reflow because many pins are connected for use, apply an adhesive to several positions.

Vertical type connection socket for surface mounting [two-row type] [with position]

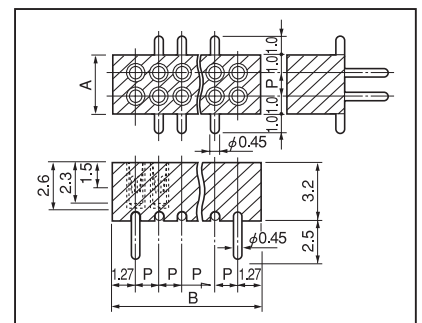
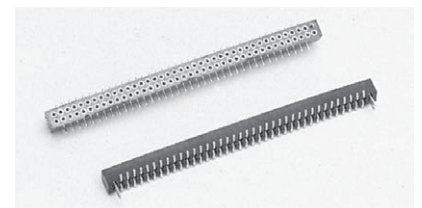
PCWS series (10pcs/pack)

- This is the type with the positioning sockets attached to PCW series described above. (In the same manner as the face mounting socket, the positioning sockets can be electrically used.)
- The specification is same as PCW series.

How to order
PCWS-1-1-10PW

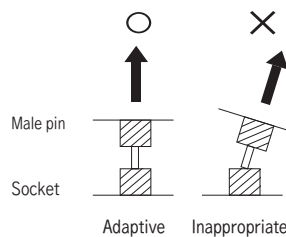
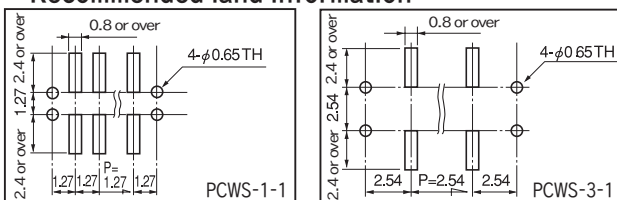
↑ Please fill in the number of poles on one side.
(Please fill in the number of poles including the positioning sockets.) (With 8P x 2 as the face mounting socket and 2P x 2 as the positioning socket.)

- Instructions for use (PCW, PCWS)
When pulling out the male pin, please pull it out vertically. Pulling by twisting or inclining may cause breakage of the socket.



Part No.	A	B	P	Maximum number of sockets connected
PCWS-1-1	3.27	52.07	1.27	40 x 2
PCWS-3-1	4.54	50.8	2.54	20 x 2

Recommended land information



Instructions for mounting

In the case that a warpage occurs on the resin part during reflow because many pins are connected for use, apply an adhesive to several positions.