

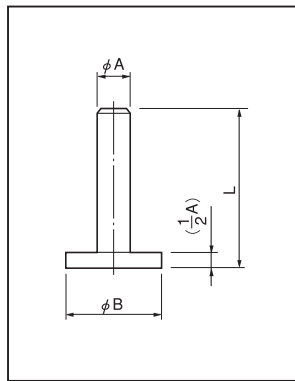
**Pin for surface mounting**

**DH, DHS series (1000pcs/pack)**

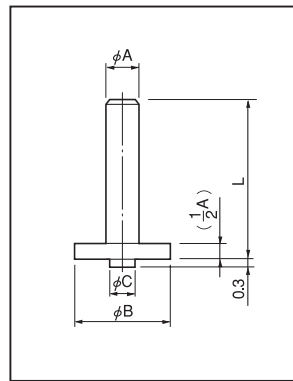
- This pin can stand on a board for surface mounting.
- DHS series allows positioning.
- Material DH-4 to DH-6: Phosphor bronze  
DHS-4 to DHS-6: Phosphor bronze  
DH-8 to DH-20: Copper  
DHS-8 to DHS-20: Copper
- Finish: Gold plating over nickel base



- Rated current
  - DH-4-□ ) 2A
  - DHS-4-□ )
  - DH-6-□ ) 4A
  - DHS-6-□ )
  - DH-8-□ ) 5A
  - DHS-8-□ )
  - DH-10-□ ) 10A
  - DHS-10-□ )
  - DH-12-□ ) 13A
  - DHS-12-□ )
  - DH-14-□ ) 20A
  - DHS-14-□ )
  - DH-20-□ ) 30A
  - DHS-20-□ )

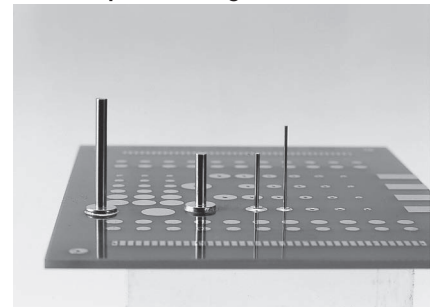


DH series



DHS series  
(with positioning pin)

■ Example of usage

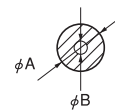


■ Recommended land information

- DH series
  - $\phi A$
  - DH- 4 2.0
  - DH- 6 2.5
  - DH- 8 3.0
  - DH-10 3.5
  - DH-12 4.0
  - DH-14 4.5
  - DH-20 6.0



- DHS series
  - $\phi A$   $\phi B^{+0.1}_{-0}$
  - DHS- 4 2.0 0.5
  - DHS- 6 2.5 0.7
  - DHS- 8 3.0 0.7
  - DHS-10 3.5 0.7
  - DHS-12 4.0 0.7
  - DHS-14 4.5 0.9
  - DHS-20 6.0 0.9



\* Apply the cream solder evenly.

Part No.	A	B	L
DH-4-5	0.45	1.2	5
DH-4-10	0.45	1.2	10
DH-4-15	0.45	1.2	15
DH-4-20	0.45	1.2	20
DH-6-5	0.6	1.8	5
DH-6-10	0.6	1.8	10
DH-6-15	0.6	1.8	15
DH-6-20	0.6	1.8	20
DH-8-5	0.8	2.3	5
DH-8-10	0.8	2.3	10
DH-8-15	0.8	2.3	15
DH-8-20	0.8	2.3	20
DH-10-5	1.0	3.0	5
DH-10-10	1.0	3.0	10
DH-10-15	1.0	3.0	15
DH-10-20	1.0	3.0	20
DH-12-5	1.2	3.5	5
DH-12-10	1.2	3.5	10
DH-12-15	1.2	3.5	15
DH-12-20	1.2	3.5	20
DH-14-5	1.4	4.0	5
DH-14-10	1.4	4.0	10
DH-14-15	1.4	4.0	15
DH-14-20	1.4	4.0	20
DH-20-5	2.0	5.5	5
DH-20-10	2.0	5.5	10
DH-20-15	2.0	5.5	15
DH-20-20	2.0	5.5	20

Part No.	A	B	C	L
DHS-4-5	0.45	1.2	0.45	5
DHS-4-10	0.45	1.2	0.45	10
DHS-4-15	0.45	1.2	0.45	15
DHS-4-20	0.45	1.2	0.45	20
DHS-6-5	0.6	1.8	0.6	5
DHS-6-10	0.6	1.8	0.6	10
DHS-6-15	0.6	1.8	0.6	15
DHS-6-20	0.6	1.8	0.6	20
DHS-8-5	0.8	2.3	0.6	5
DHS-8-10	0.8	2.3	0.6	10
DHS-8-15	0.8	2.3	0.6	15
DHS-8-20	0.8	2.3	0.6	20
DHS-10-5	1.0	3.0	0.6	5
DHS-10-10	1.0	3.0	0.6	10
DHS-10-15	1.0	3.0	0.6	15
DHS-10-20	1.0	3.0	0.6	20
DHS-12-5	1.2	3.5	0.6	5
DHS-12-10	1.2	3.5	0.6	10
DHS-12-15	1.2	3.5	0.6	15
DHS-12-20	1.2	3.5	0.6	20
DHS-14-5	1.4	4.0	0.8	5
DHS-14-10	1.4	4.0	0.8	10
DHS-14-15	1.4	4.0	0.8	15
DHS-14-20	1.4	4.0	0.8	20
DHS-20-5	2.0	5.5	0.8	5
DHS-20-10	2.0	5.5	0.8	10
DHS-20-15	2.0	5.5	0.8	15
DHS-20-20	2.0	5.5	0.8	20