

Knurled screw

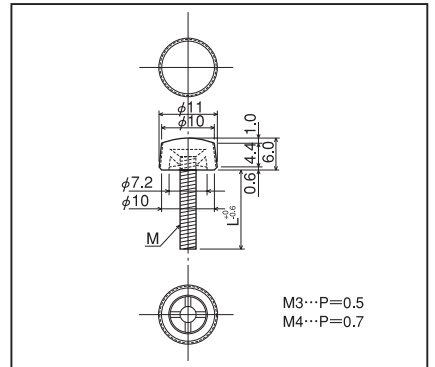
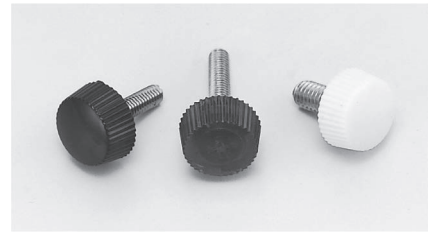
3RN, 4RN series (10pcs/pack)

- This knurled screw is used for a knob, etc.
- This is available for M3 and M4.
- Material Resin part: Polycarbonate (UL94V-2)
Color: Transparent RED, WHITE, BLACK
Screw part: Stainless steel
- Operating temperature range: - 20 to + 100 °C

■ Part No.

Part No.	L	M
3RN-6	6	M3
3RN-8	8	M3
3RN-10	10	M3
3RN-12	12	M3
3RN-15	15	M3
3RN-20	20	M3

Part No.	L	M
4RN-6	6	M4
4RN-8	8	M4
4RN-10	10	M4
4RN-12	12	M4
4RN-15	15	M4
4RN-20	20	M4



■ How to order

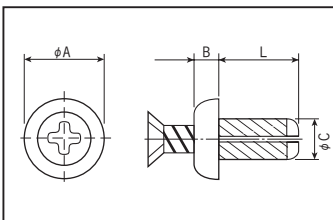
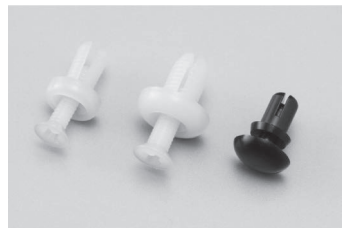
3RN-6 WHITE

Please specify the color. (Transparent RED, WHITE or BLACK)

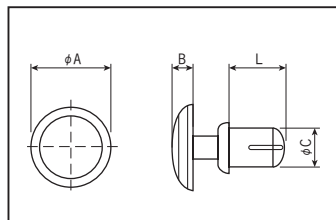
Push rivet

RV series (100pcs/pack)

- This resin rivet is used for fitting a panel, etc. The leg part is pushed wide by being pressed with a finger to fix a panel, etc.
- RV-1 series can be detached by being turned by a cross slot screwdriver.
- RV-2 series can be detached by inserting a straight slot screwdriver under the head.
- Material: 46 nylon (UL94V-2)
- Operating temperature range: - 20 to + 120°C

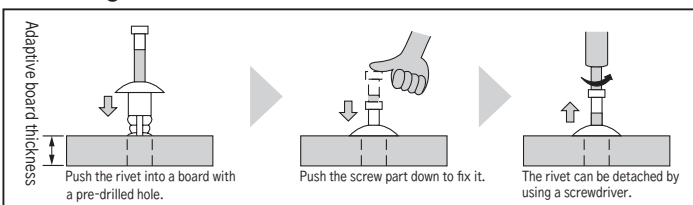


RV-1 series



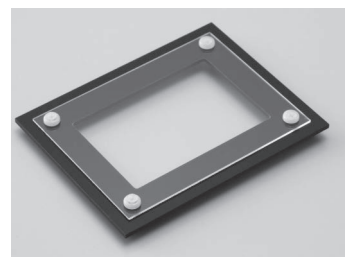
RV-2 series

■ Fitting method for RV-1 series

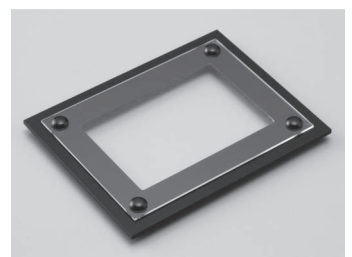


Part No.	A	B	C	L	Fitting hole diameter	Adaptive total thickness of the two boards	Color
RV-1-3-6	6	1.8	3	6	ϕ 3.1	3.0 to 4.5	IVORY (natural)
RV-1-4-6	8	2.0	4	6	ϕ 4.1	3.0 to 4.5	IVORY (natural)
RV-2-3-4.5	6.4	1.6	3	4.5	ϕ 3.1	2.0 to 3.5	BLACK
RV-2-3-5.5	6.4	1.6	3	5.5	ϕ 3.1	2.5 to 4.0	BLACK
RV-2-3.5-4.5	6.4	1.6	3.5	4.5	ϕ 3.6	2.0 to 3.5	BLACK
RV-2-4-5	8	1.8	4	5	ϕ 4.1	2.0 to 3.5	BLACK

■ Example of usage



RV-1 series



RV-2 series