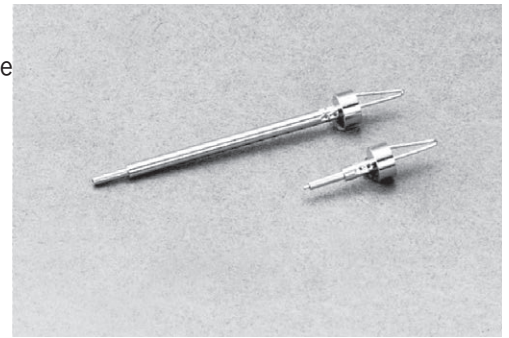


Conthrough series for two-tiered installation and for check

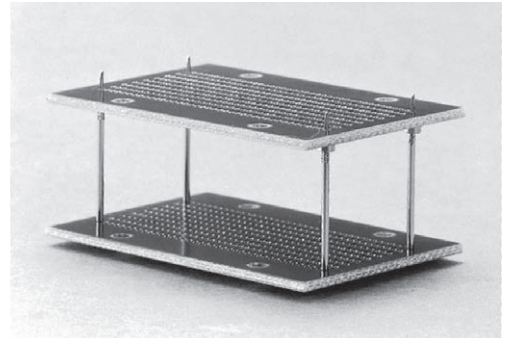
XE series (100pcs/pack)

- This is used for mounting PC boards by two-tiered installation.
- This can be also used for an inspection jig when checking PC boards.
- Electric contact can be gained on the insertion side just by insertion to the through hole (ϕ 0.8 to ϕ 1.0).
- Material
 - Body: Brass
 - Contact part: Beryllium copper
- Finish: Gold plating over nickel base
- Rated current: 1A
- Rated voltage: 125V AC, DC
- Contact resistance: 30m Ω or less
- Printed board fitting hole (Soldering side): ϕ 0.8
- Adaptive through hole for printed board (contact side): ϕ 0.8 to ϕ 1.0
- Adaptive printed board thickness (contact side): t0.8 to t3.2
- Operating temperature range: - 40 to + 125°C
- Operating humidity range: 0 to 85%RH (Without dew condensation.)
- Frequency of use: 50 times or less (for the same through hole)
- Insertion / removal forces (per pin)

Through hole	Insertion forces	Removal forces
ϕ 0.8	200g or less	50g or over
ϕ 0.9	100g or less	30g or over
ϕ 1.0	100g or less	20g or over



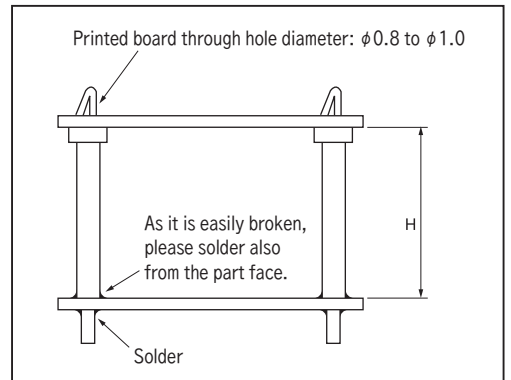
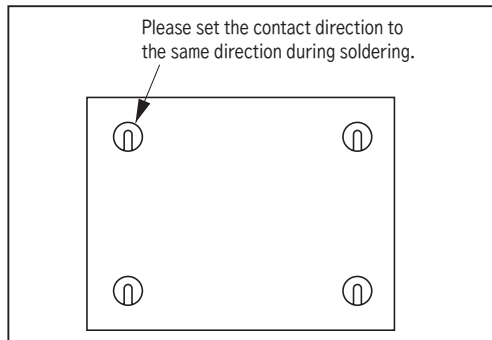
■ Example of usage



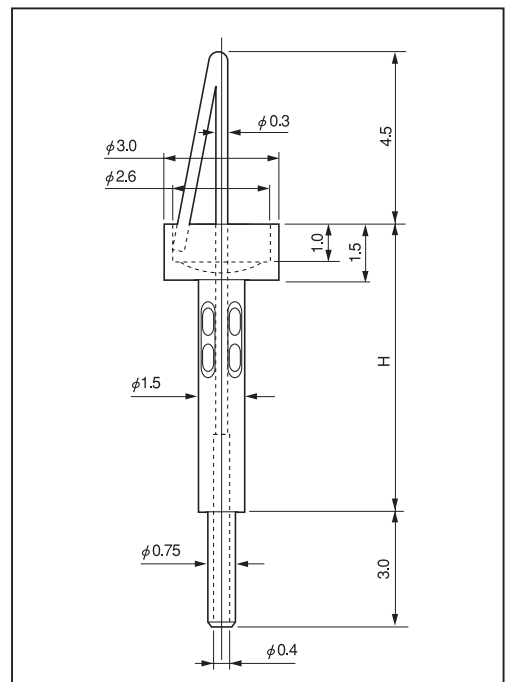
■ Part No.

Part No.	H
XE-4	4
XE-5	5
XE-6	6
XE-7	7
XE-8	8
XE-9	9
XE-10	10
XE-11	11
XE-12	12
XE-13	13
XE-14	14
XE-15	15
XE-20	20

● Instructions for fitting



■ Dimension



* Please read the instructions for use (2 through 5) prior to use.

■ Instructions for soldering

- Please raise the solder from the part face, too. (Because it can be easily broken.)
- Recommended land information
 - ϕ 0.8 TH diameter
 - ϕ 2.5 land diameter

■ Instructions for use

- This is easily broken. Do not apply force in the horizontal direction.
- This cannot be used when the insertion / removal side is a copper through hole board. (Due to quick oxidization of copper)