

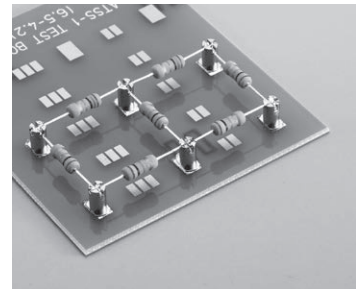
Terminal for bidirectional adjustment part for surface mounting

ATSS series

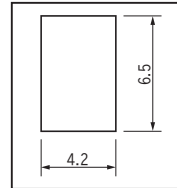
- This is used for fitting a lead type part to a surface mounting board.
- Please solder the part by placing the lead on the upper groove.
- This is recommended when it is difficult to align the mounting direction with [ATS series].
- Material: Brass



Example of usage



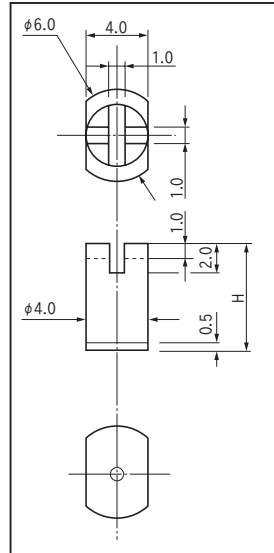
Recommended land information



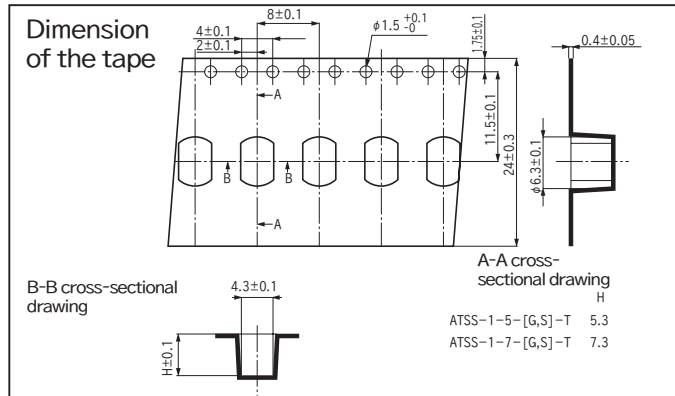
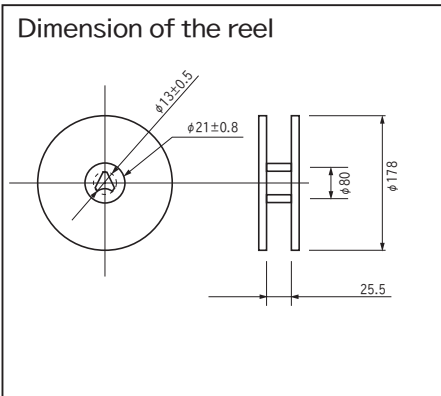
Part No.

| Part No. | H | Finish | Package |
|---------------|----|-------------------------------|--------------------|
| ATSS-1-5-G | 5 | Gold plating over nickel base | Bulk (100pcs/pack) |
| ATSS-1-5-G-T | 5 | Gold plating over nickel base | Reel (300pcs/reel) |
| ATSS-1-5-S | 5 | Tin plating over nickel base | Bulk (100pcs/pack) |
| ATSS-1-5-S-T | 5 | Tin plating over nickel base | Reel (300pcs/reel) |
| ATSS-1-7-G | 7 | Gold plating over nickel base | Bulk (100pcs/pack) |
| ATSS-1-7-G-T | 7 | Gold plating over nickel base | Reel (200pcs/reel) |
| ATSS-1-7-S | 7 | Tin plating over nickel base | Bulk (100pcs/pack) |
| ATSS-1-7-S-T | 7 | Tin plating over nickel base | Reel (200pcs/reel) |
| ATSS-1-10-G | 10 | Gold plating over nickel base | Bulk (100pcs/pack) |
| ATSS-1-10-G-T | 10 | Gold plating over nickel base | Reel (250pcs/reel) |
| ATSS-1-10-S | 10 | Tin plating over nickel base | Bulk (100pcs/pack) |
| ATSS-1-10-S-T | 10 | Tin plating over nickel base | Reel (250pcs/reel) |
| ATSS-1-14-G | 14 | Gold plating over nickel base | Bulk (100pcs/pack) |
| ATSS-1-14-G-T | 14 | Gold plating over nickel base | Reel (200pcs/reel) |
| ATSS-1-14-S | 14 | Tin plating over nickel base | Bulk (100pcs/pack) |
| ATSS-1-14-S-T | 14 | Tin plating over nickel base | Reel (200pcs/reel) |

Dimension



ATSS-1-5- [G, S] -T, ATSS-1-7- [G, S] -T



ATSS-1-10- [G, S] -T, ATSS-1-14- [G, S] -T

