

Lever-type electric wire installation terminal (SMT type)

WXF-4-2

- This terminal connects and fixes electric wire without soldering to a board.
- With the tape-and-reel, it can be automatically mounted by using a mounter.
- Attaching and detaching of electric wire can be easily carried out by using a commercially available precision screwdriver. (It is also sold by us.)

Material

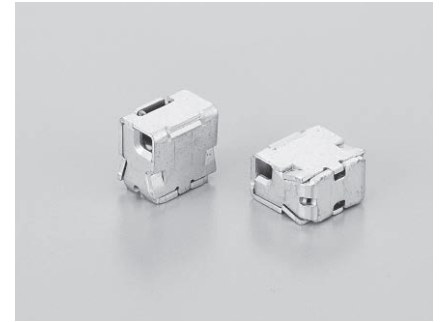
Lever part: Stainless steel
 Inner spring: Stainless steel
 Upper body: Copper: Tin plating over nickel base
 Lower body: Phosphor bronze: Tin plating over nickel base

- Adaptive electric wire: AWG28 to AWG20
- Covering peeling length: 7 mm
- Recommended metal mask thickness: 150 μm to 200 μm
- Current capacity: 8A
- Operating temperature range: -40 to $+125^{\circ}\text{C}$

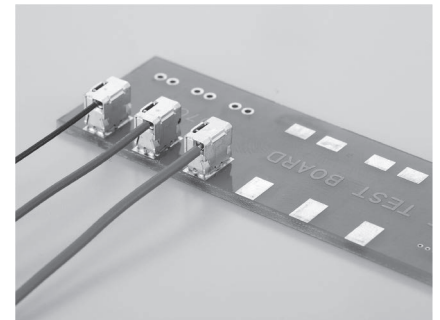
How to order

WXF-4-2 (200pcs/reel)

WXF-4-2-B (For bulk products, 10pcs/package)



Example of usage



Detachable screwdriver

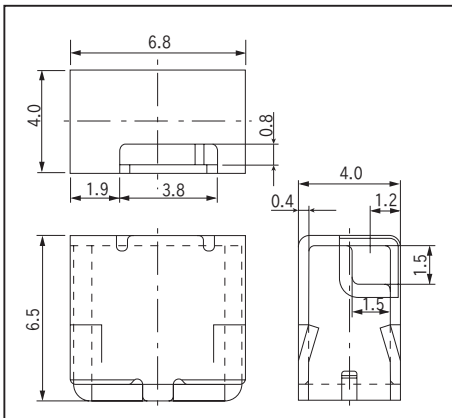
Part No.: **WXF-DR** (1pc/package)

Tool

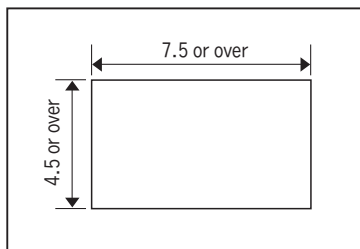


WXF-DR

Dimension

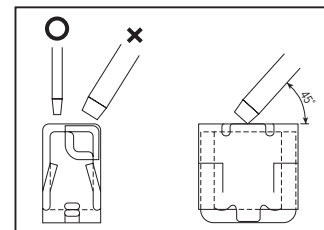


Recommended land information



How to operate the lever

Insert the screwdriver in the long square hole of the product after aligning the direction of the screwdriver to the hole. Then, push the lever at approximately 45 degrees.

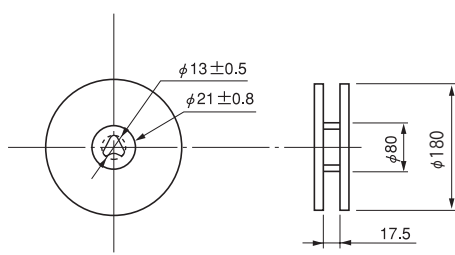


* Attention

- Please avoid washing as a whole because it may affect the inner contact face.

Dimension of the reel

Dimension of the reel



Dimension of the tape

