

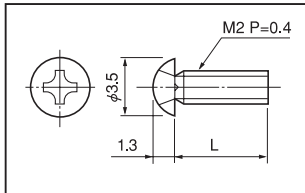
Resin type screw PPS

2MPS, 2.6MPS, 3MPS, 4MPS series (100pcs/pack)

- This is a resin type screw. The material has excellent heat resistance property.
 - This is used when insulation is required.
 - Material: PPS resin (UL94V-0)
 - Twist-cut torque: Screw: M2: 0.8kgf-cm (7.8N-cm)
 M2.6: 1.9kgf-cm (18.6N-cm)
 M3: 3kgf-cm (29.4N-cm)
 M4: 7kgf-cm (68.6N-cm)
 Nut: M2.6: 1.9kgf-cm (18.6N-cm)
 M3: 3kgf-cm (29.4N-cm)
 M4: 7kgf-cm (68.6N-cm)
- (These values are for reference.)
 (Please use with 50% value of the recommended tightening torque described above.)
- Operating temperature range: - 40 to + 200°C

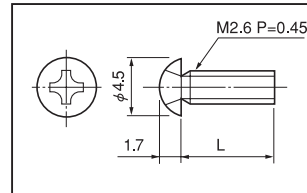


■ 2MPS series (for M2)



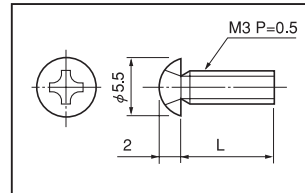
Part No.	L
2MPS-4	4
2MPS-5	5
2MPS-6	6
2MPS-8	8
2MPS-10	10
2MPS-12	12

■ 2.6MPS series (for M2.6)



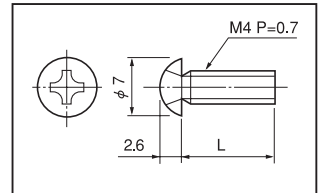
Part No.	L
2.6MPS-6	6
2.6MPS-8	8
2.6MPS-10	10
2.6MPS-12	12

■ 3MPS series (for M3)



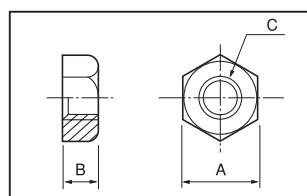
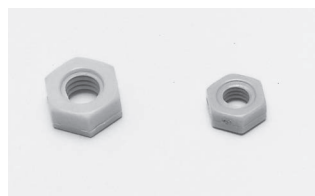
Part No.	L
3MPS-5	5
3MPS-6	6
3MPS-8	8
3MPS-10	10
3MPS-12	12
3MPS-16	16
3MPS-20	20

■ 4MPS series (for M4)



Part No.	L
4MPS-6	6
4MPS-8	8
4MPS-10	10
4MPS-12	12
4MPS-16	16
4MPS-20	20
4MPS-25	25

■ Nut



Part No.	A	B	C
2.6MPS-N	5	2.0	M2.6
3MPS-N	5.5	2.4	M3
4MPS-N	7	3.2	M4