

For surface mounting Conthrough series for printed board angle fitting type

XK series (10pcs/pack)

- This is used for standing a through hole board on a surface mounting board at right angle.
- Maximum 40P connected for a pitch of 1.27 mm / Maximum 20P connected for a pitch of 2.54 mm
- Positioning pin is included on the both sides.
- Material
 - Pin part: Beryllium copper
 - Resin part: LCP resin black (UL94V-0)
- Finish: Gold plating over nickel base
- The electrical specification is same as XA series.
- Adaptive through hole for printed board (contact side): ϕ 0.8 to ϕ 0.9 for the TH finish diameter (Please make a hole of ϕ 0.85 as the main diameter.)
- Adaptive printed board thickness (contact side): t0.8 to t1.6
- Operating temperature range: - 40 to + 125°C
- Operating humidity range: 0 to 85% RH (Without dew condensation.)
- Frequency of use: 50 times or less (for the same through hole)
- Insertion / removal forces (per pin)

Through hole	Insertion forces	Removal forces
ϕ 0.8	200g or less	50g or over
ϕ 0.85	150g or less	30g or over
ϕ 0.9	100g or less	20g or over

Part No.	P	Maximum number of poles
XK-1-2	1.27	40
XK-3-2	2.54	20

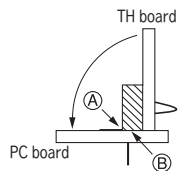
Recommended land information

• PC board on the contact side

• PC board on the soldering side

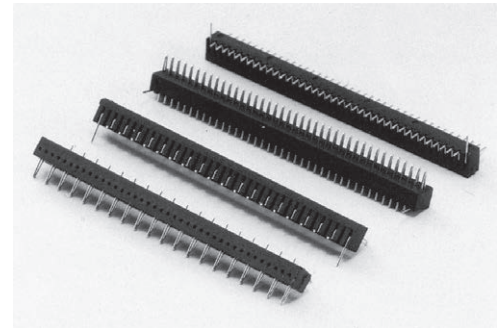
Instructions for use

1. Please fit the fitting block on the both sides and tighten with a screw.
2. Do not apply force in the direction of the arrow. (The pin may be broken or bent.)

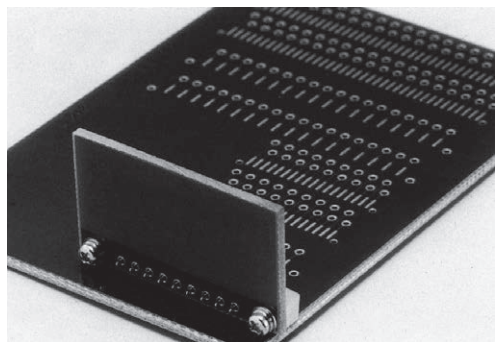
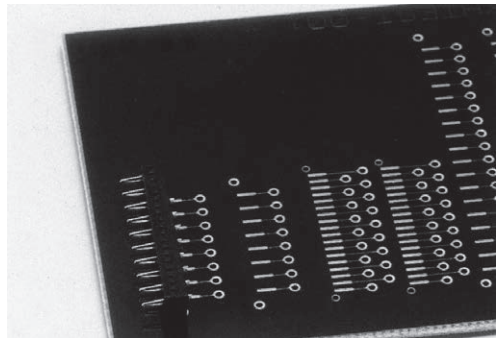


If the force is applied in the direction of the arrow, or if the TH board hole diameter is close to ϕ 0.8 with a large number of poles, significant forces are applied to the part (A) and the pin may be broken or bent.
Please apply epoxy adhesive to several places on the back side (part (B)) to fix to the PC board during mounting.

3. Please read the instructions 1 through 5 for using the Conthrough series prior to use.
4. When inserting into a small hole diameter (around ϕ 0.8), the spring may be hooked to the resin window and the return may become insufficient. In this case, please push to the direction of the arrow and return.

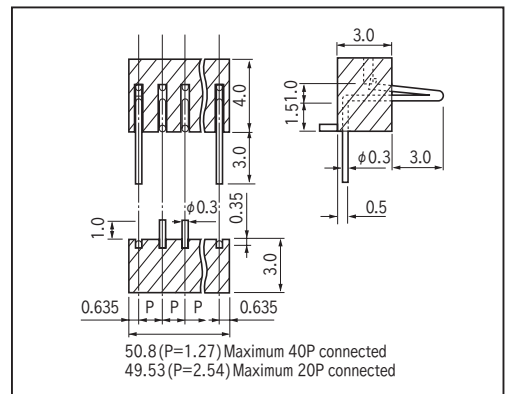


Example of usage



Please fix by using the fitting block BA series.

Dimension



How to order

XK-3-2-10P

Please fill in the desired number of poles. (With 8P for pins for surface mounting and 2P for positioning pins)

Instructions for use

- This cannot be used when the insertion / removal side is a copper through hole board. (Due to quick oxidization of copper)