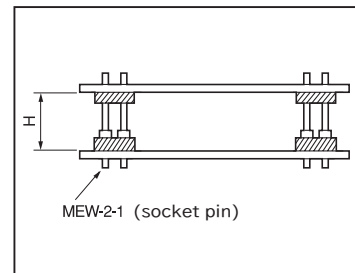
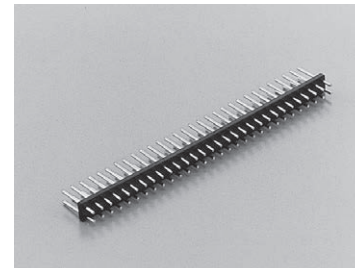
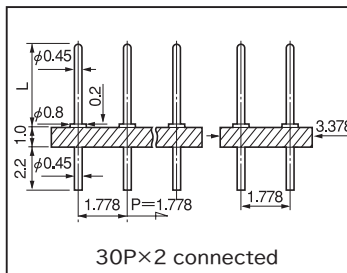


**Super-small terminal for two-tiered installation (two-row type)(Pitch: 1.778 mm)**

**MXW-2 series (10pcs/pack)**

- This is used for mounting PC boards by two-tiered installation.
- This terminal is of two-row type with a pitch of 1.778mm.
- Material  
 Resin part: PPS resin black (UL94V-0),  
 Pin part: Phosphor bronze, Finish: Gold plating over nickel base
- Rated current: 2A
- Insulation resistance: 500M Ω or over
- Withstand voltage: 1000V AC, DC per minute
- Operating temperature range: - 40 to + 125°C
- Printed board fitting hole diameter: φ 0.6
- Adaptive socket: MEW-2 series

Part No.	L	Number of pins connected	H	Adaptive socket pin
MXW-2-0	3.0	30 × 2	—	—
MXW-2-1	3.7	30 × 2	3.5	MEW-2-1
MXW-2-2	4.4	30 × 2	4.0	
MXW-2-3	4.9	30 × 2	4.5	
MXW-2-4	5.4	30 × 2	5.0	



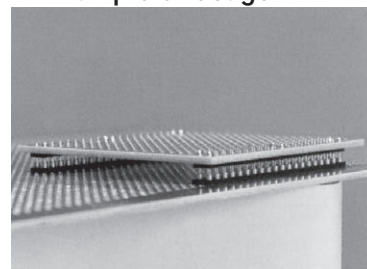
\* The dimension H indicates the distance between the boards when combining MXW-2 series with MEW-2-1

**How to order:**

MXW-2-1-10PW

Please fill in the number of poles on one side.  
 (Maximum number: 30PW)  
 (If the number is not specified, we will deliver the part of the maximum number of connection.)

**Example of usage**



Combination of MXW-2 series with MEW-2-1

**Socket pin with super-low back (Pitch: 1.778mm)**

**Part No.: MEW-2-1 (10pcs/pack)**

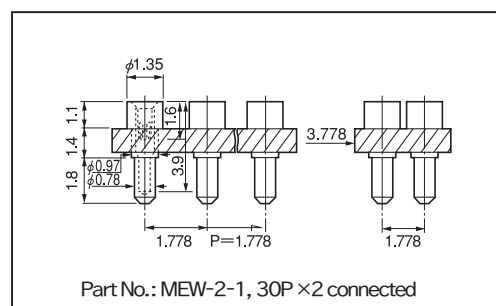
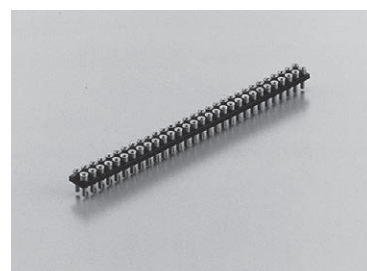
- By combining this with MXW-2 series, PC boards can be mounted by two-tiered installation.
- This terminal is of two-row type with a pitch of 1.778 mm.
- Material  
 Resin part: PPS resin black (UL94V-0),  
 Pin part Body: Brass: Tin plating over nickel base  
 Contact part Beryllium copper: Gold plating over nickel base
- Operating temperature range: - 40 to + 125°C
- Insulation resistance : 500M Ω or over
- Insertion / removal durability : 100 cycles
- Insertion / removal forces: 30g or over (per pin)
- Adaptive male pin diameter: φ 0.35 to φ 0.47
- Printed board fitting hole diameter: φ 0.9 to φ 1.0
- Rated current: 1A
- Withstand voltage: 700V AC, DC per minute
- Contact resistance: 10m Ω or less

**Part No.: MEW-2-1**

**How to order:**

MEW-2-1-10PW

Please fill in the number of poles on one side.  
 (Maximum number: 30PW)  
 (If the number is not specified, we will deliver the part of the maximum number of connection.)



Part No.: MEW-2-1, 30P × 2 connected