

Resin type screw Polyamide

2M, 2.6M, 3M, 4M series (100pcs/pack)

- This is a resin type screw.
- This is used when insulation is required.
- Material: Special polyamide resin (UL94HB)
Natural color (ivory)
- Twist-cut torque: Screw: M2: 1kgf-cm (9.8N-cm)
M2.6: 2kgf-cm (19.6N-cm)
M3: 3kgf-cm (29.4N-cm)
M4: 8kgf-cm (78.4N-cm)
Nut: M2: 1kgf-cm (9.8N-cm)
M2.6: 2kgf-cm (19.6N-cm)
M3: 4kgf-cm (39.2N-cm)
M4: 10kgf-cm (98N-cm)

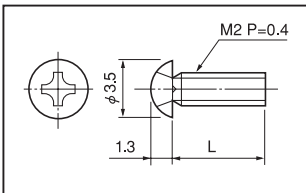
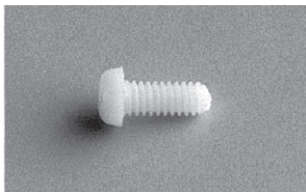


(These values are for reference.)

(Please use with 50% valve of the recommended tightening torque described above.)

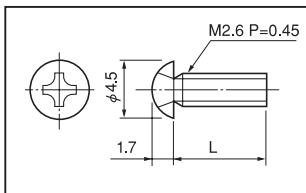
- Operating temperature range: - 40 to + 125°C

■ 2M series (for M2)



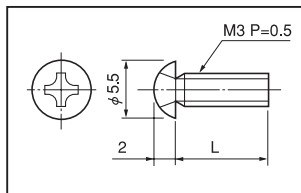
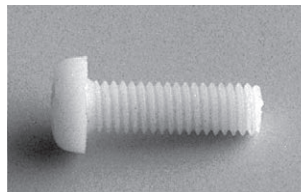
Part No.	L
2M-3	3
2M-4	4
2M-5	5
2M-6	6
2M-8	8
2M-10	10

■ 2.6M series (for M2.6)



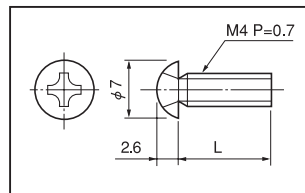
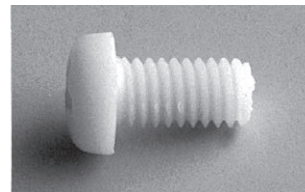
Part No.	L
2.6M-6	6
2.6M-8	8
2.6M-10	10
2.6M-12	12

■ 3M series (for M3)



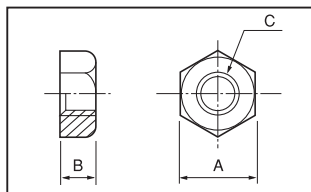
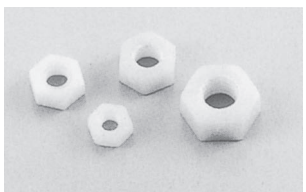
Part No.	L
3M-4	4
3M-5	5
3M-6	6
3M-8	8
3M-10	10
3M-12	12
3M-16	16
3M-20	20

■ 4M series (for M4)



Part No.	L
4M-5	5
4M-6	6
4M-8	8
4M-10	10
4M-12	12
4M-16	16
4M-20	20
4M-25	25

■ Nut

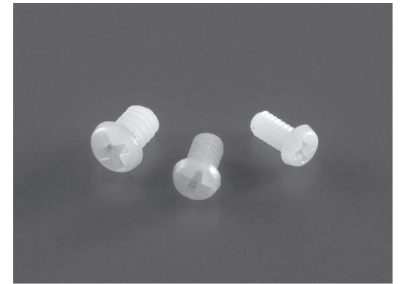


Part No.	A	B	C
2M-N	4	1.6	M2
2.6M-N	5	2.0	M2.6
3M-N	5.5	2.4	M3
4M-N	7	3.2	M4

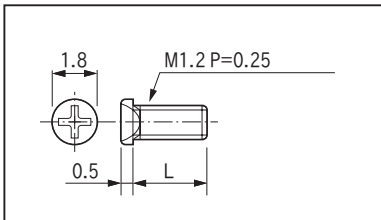
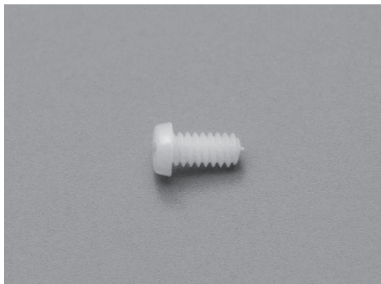
Resin type screw Polyamide

1.2M, 1.4M, 1.6M series (100pcs/pack)

- This is a resin type screw.
- This is used when insulation is required.
- Material: Special polyamide resin (UL94HB)
Natural color (ivory)
- Twist-cut torque: M1.2: 0.18kgf-cm (1.8N-cm)
M1.4: 0.18kgf-cm (1.8N-cm)
M1.6: 0.23kgf-cm (2.3N-cm)
(These values are for reference.)
(Please use with 50% value of the recommended tightening torque described above.)
- Operating temperature range: - 20 to + 100°C



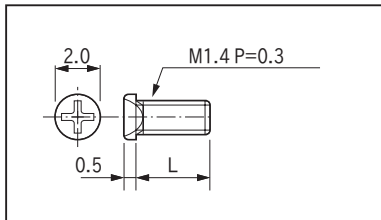
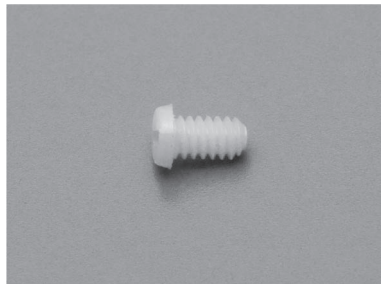
■ 1.2M series



■ Part No.

Part No.	L
1.2M-2.5	2.5
1.2M-4	4

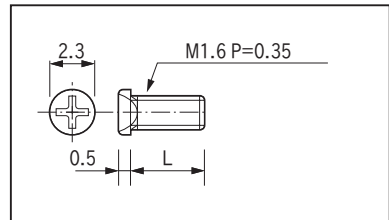
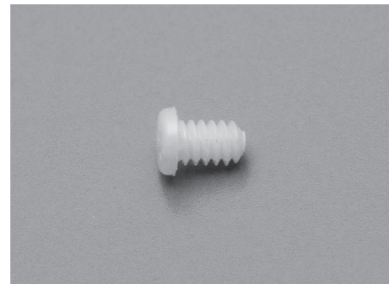
■ 1.4M series



■ Part No.

Part No.	L
1.4M-2.5	2.5
1.4M-4	4

■ 1.6M series



■ Part No.

Part No.	L
1.6M-2.5	2.5
1.6M-4	4