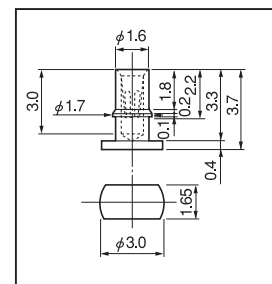


Socket pin for surface mounting

Part No.: **PE-1**

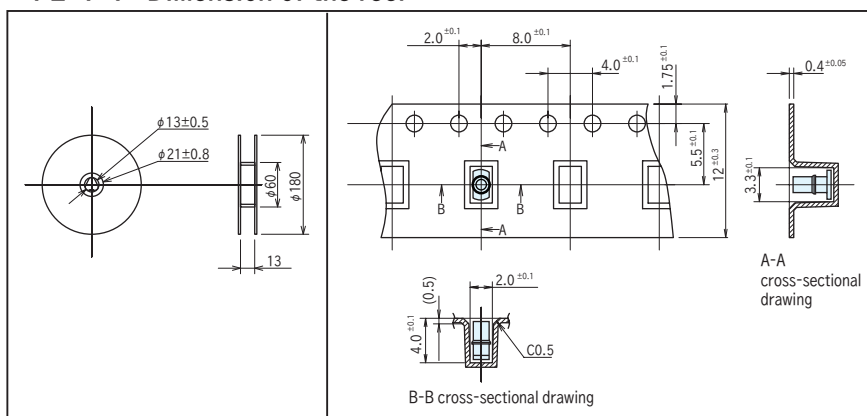
- This socket can be fit to a surface mounting board.
- Adaptive male pin is OP-1-2, OP-2-2 and OJ-2.
- Material
 - Body Brass: Tin plating over nickel base
 - Contact part Beryllium copper: Gold plating over nickel base
- Specification
 - Rated current: 1A
 - Contact resistance: 10m Ω or less
 - Insertion / removal durability : 100 cycles
 - Insertion / removal forces: 70g or over
 - Adaptive male pin diameter: ϕ 0.45 to ϕ 0.6
 - Operating temperature range: -40 to $+125^{\circ}\text{C}$



■ Part No.:

Part No.	Package
PE-1	Bulk (100 pcs/pack)
PE-1-T	Reel (500 pcs/reel)

■ PE-1-T Dimension of the reel



* It does not include adsorption pins