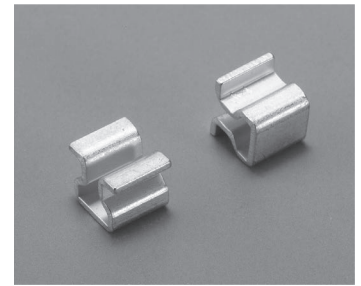


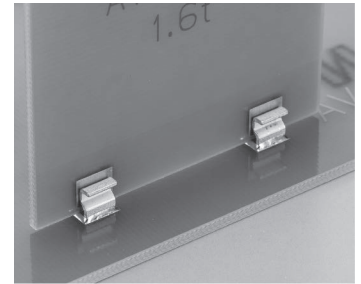
**Printed Board vertical fitting clasp (for SMT)**

**AV-5 series**

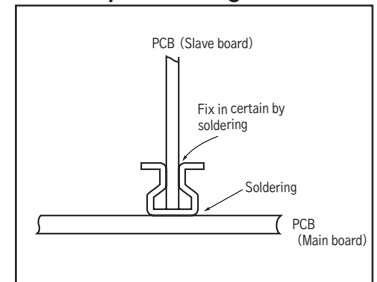
- After mounted by soldering to the SMT board you can insert the slave board vertically.
- Please carry out soldering to ensure the slave board was mounted securely.
- For tape-and-reel type, please remove adsorption film after reflow.
- In case of hand soldering, we recommend to insert the slave board into the product before soldering in to the main board.
- Possible to fix the PCB and flow the current.
- Material: Phosphor bronze
- Finish: Tin plating over nickel base
- Rated current: 20A



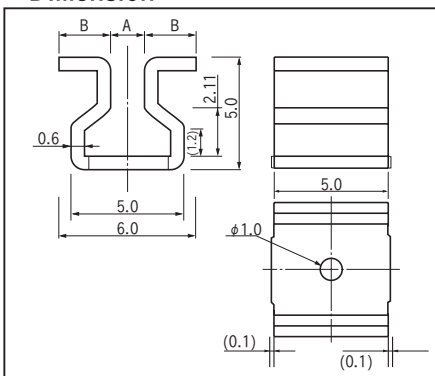
■ Example of usage



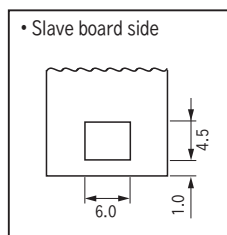
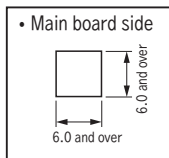
■ Example of usage



■ Dimension



■ Recommended land information



Part No.	A	B
AV-5-0.6	0.5	2.75
AV-5-1.0	0.9	2.55
AV-5-1.6	1.5	2.25

■ Part No.

Part No.	Adaptive PCB thickness	Package
AV-5-0.6	0.6	Bulk (100pcs/pack)
AV-5-0.6-T	0.6	Reel (200pcs/reel)
AV-5-1.0	1.0	Bulk (100pcs/pack)
AV-5-1.0-T	1.0	Reel (200pcs/reel)
AV-5-1.6	1.6	Bulk (100pcs/pack)
AV-5-1.6-T	1.6	Reel (200pcs/reel)

- There is an adsorption film to the reel type

Dimension of the reel

Dimension of the tape