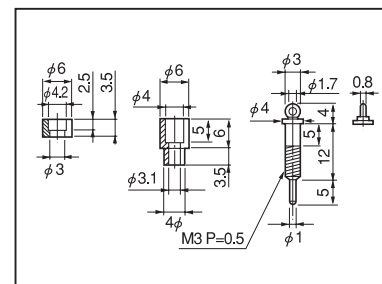
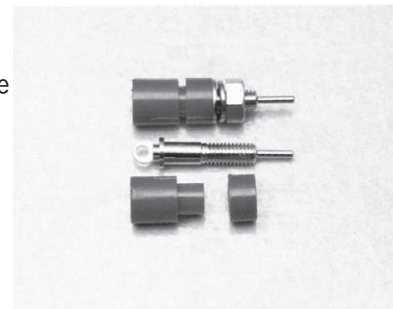


**Check terminal for panel**

Part No.: **PN-6-1** (10pcs/pack)

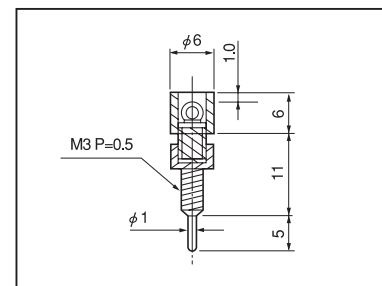
- This is fitting to the panel and used for checking a signal line.
- This can hook an oscilloscope probe.
- As the terminal is recessed to the deep part and it does not contact to hand, it can be used safely.
- Six colors are available.
- Material
  - Resin part: Acetal copolymer (UL94HB)
  - Metal part: Brass
  - Nut: Brass
- Finish Metal part: Gold plating over nickel base
  - Nut: Nickel plating
- Insulation resistance: 500M Ω or over
- Withstand voltage: 1000V AC, DC per minute
- Operating temperature range: - 40 to + 85°C
- Thickness of panel that can be fit: 1.0mm to 3.0mm
- Panel fitting hole diameter: φ 4.2
- Resin color: BLACK, RED, YELLOW, GREEN, BLUE, WHITE



■ **How to order**

PN-6-1 RED

↑ Please specify the resin color.  
(BLACK, RED, YELLOW, GREEN, BLUE, WHITE)



■ **Instructions for use**

- Please use with the tightening torque of 3kgf-cm (29.4 N-cm) or less when fitting.

■ **Example of usage**

