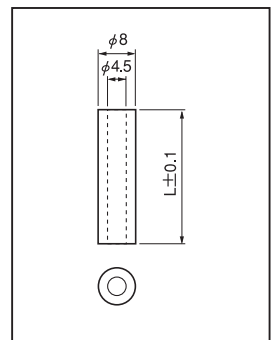
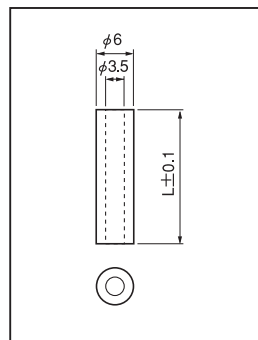
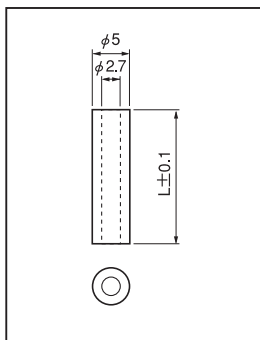
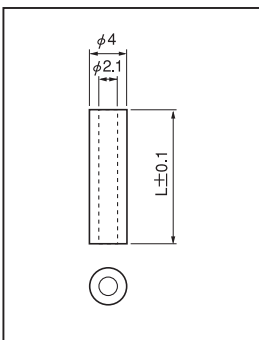
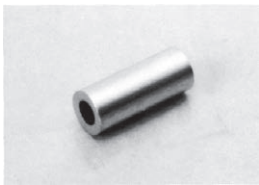


# Metal type

Spacer of hollow shape for printed board

**ER series** (100pcs/pack)

- This is used for fitting a printed board to a chassis, and other adaptive cases.
- The inside is hollow.
- Material: Brass
- Finish: Nickel plating



■ For M2 screw

Part No.	L
2ER-0.5	0.5
2ER-1	1
2ER-1.5	1.5
2ER-2	2
2ER-2.5	2.5
2ER-3	3
2ER-3.5	3.5
2ER-4	4
2ER-4.5	4.5
2ER-5	5
2ER-5.5	5.5
2ER-6	6
2ER-6.5	6.5
2ER-7	7
2ER-7.5	7.5
2ER-8	8
2ER-8.5	8.5
2ER-9	9
2ER-9.5	9.5
2ER-10	10
2ER-11	11
2ER-12	12
2ER-12.5	12.5
2ER-13	13
2ER-14	14
2ER-15	15
2ER-16	16
2ER-17	17
2ER-17.5	17.5
2ER-18	18
2ER-19	19
2ER-20	20
2ER-25	25
2ER-30	30

■ For M2.6 screw

Part No.	L
2.6ER-0.5	0.5
2.6ER-1	1
2.6ER-1.5	1.5
2.6ER-2	2
2.6ER-2.5	2.5
2.6ER-3	3
2.6ER-3.5	3.5
2.6ER-4	4
2.6ER-4.5	4.5
2.6ER-5	5
2.6ER-5.5	5.5
2.6ER-6	6
2.6ER-6.5	6.5
2.6ER-7	7
2.6ER-7.5	7.5
2.6ER-8	8
2.6ER-8.5	8.5
2.6ER-9	9
2.6ER-9.5	9.5
2.6ER-10	10
2.6ER-11	11
2.6ER-12	12
2.6ER-12.5	12.5
2.6ER-13	13
2.6ER-14	14
2.6ER-15	15
2.6ER-16	16
2.6ER-17	17
2.6ER-17.5	17.5
2.6ER-18	18
2.6ER-19	19
2.6ER-20	20
2.6ER-25	25
2.6ER-30	30

■ For M3 screw

Part No.	L
ER-0.5	0.5
ER-1	1
ER-1.5	1.5
ER-2	2
ER-2.5	2.5
ER-3	3
ER-3.5	3.5
ER-4	4
ER-4.5	4.5
ER-5	5
ER-5.5	5.5
ER-6	6
ER-6.5	6.5
ER-7	7
ER-7.5	7.5
ER-8	8
ER-8.5	8.5
ER-9	9
ER-9.5	9.5
ER-10	10
ER-11	11
ER-12	12
ER-12.5	12.5
ER-13	13
ER-14	14
ER-15	15
ER-16	16
ER-17	17
ER-17.5	17.5
ER-18	18
ER-19	19
ER-20	20
ER-25	25
ER-30	30

■ For M4 screw

Part No.	L
4ER-0.5	0.5
4ER-1	1
4ER-1.5	1.5
4ER-2	2
4ER-2.5	2.5
4ER-3	3
4ER-3.5	3.5
4ER-4	4
4ER-4.5	4.5
4ER-5	5
4ER-5.5	5.5
4ER-6	6
4ER-6.5	6.5
4ER-7	7
4ER-7.5	7.5
4ER-8	8
4ER-8.5	8.5
4ER-9	9
4ER-9.5	9.5
4ER-10	10
4ER-11	11
4ER-12	12
4ER-12.5	12.5
4ER-13	13
4ER-14	14
4ER-15	15
4ER-16	16
4ER-17	17
4ER-17.5	17.5
4ER-18	18
4ER-19	19
4ER-20	20
4ER-25	25
4ER-30	30