

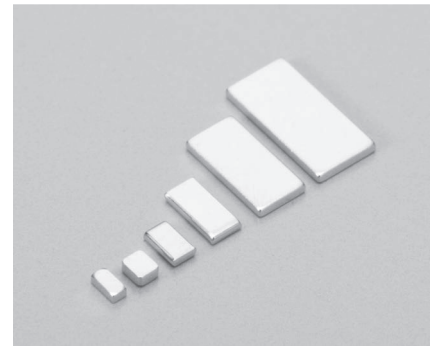
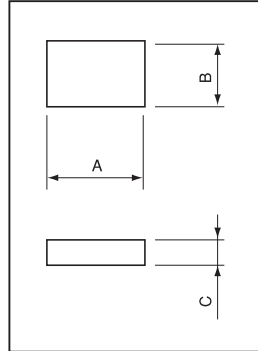
Bar for surface mounting

**NC series**

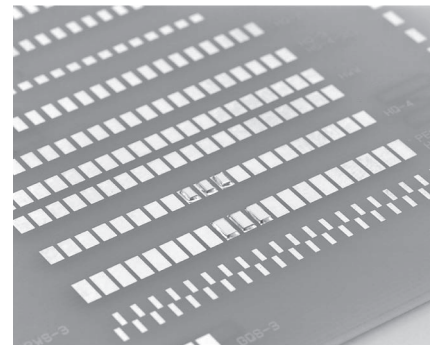
- This can be used for pattern reinforcement when checking a surface mounting board. (When putting an oscilloscope probe on the pattern.)
- This can be also used as a jumper.
- Material: Phosphor bronze Copper (only NC-0.5-5.0, NC-0.5-6.3)
- Finish: Gold plating over nickel base

■ Part No.

Part No.	A	B	C	Package
NC-0.5-1.0	1.0	0.5	0.5	Bulk (1000pcs/pack)
NC-0.5-1.0-T	1.0	0.5	0.5	Reel (3000pcs/reel)
NC-0.5-1.5	1.5	0.75	0.5	Bulk (1000pcs/pack)
NC-0.5-1.5-T	1.5	0.75	0.5	Reel (3000pcs/reel)
NC-0.5-2.0	2.0	1.25	0.5	Bulk (1000pcs/pack)
NC-0.5-2.0-T	2.0	1.25	0.5	Reel (3000pcs/reel)
NC-0.5-3.2	3.2	1.6	0.5	Bulk (1000pcs/pack)
NC-0.5-3.2-T	3.2	1.6	0.5	Reel (3000pcs/reel)
NC-0.5-5.0	5.0	2.5	0.5	Bulk (1000pcs/pack)
NC-0.5-5.0-T	5.0	2.5	0.5	Reel (1500pcs/reel)
NC-0.5-6.3	6.3	3.1	0.5	Bulk (1000pcs/pack)
NC-0.5-6.3-T	6.3	3.1	0.5	Reel (1500pcs/reel)
NC-0.65-1.3	1.3	1.1	0.65	Bulk (1000pcs/pack)
NC-0.65-1.3-T	1.3	1.1	0.65	Reel (3000pcs/reel)



■ Example of usage



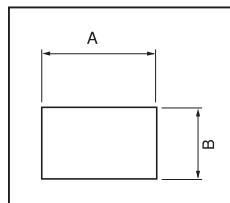
- Tin plating over nickel base type is also available.

Example of order NC-0.5-1.5-SN  
 NC-0.5-1.5-T-SN

↑ Please write SN.

■ Recommended land information

	A	B
NC-0.5-1.0	1.0 or over	0.5 or over
NC-0.5-1.5	1.5 or over	0.75 or over
NC-0.5-2.0	2.0 or over	1.25 or over
NC-0.5-3.2	3.2 or over	1.6 or over
NC-0.5-5.0	5.0 or over	2.5 or over
NC-0.5-6.3	6.3 or over	3.1 or over
NC-0.65-1.3	1.3 or over	1.1 or over



■ Dimension of the reel

Dimension of the reel

Dimension of the tape

Part No.	A	B	C	D	E	P	W	a
NC-0.5-1.0	1.2	0.6	3.5	0.6	9	4	8	60
NC-0.5-1.5	1.8	1.05	5.5	0.8	13	4	12	60
NC-0.5-2.0	2.3	1.55	5.5	0.8	13	4	12	60
NC-0.5-3.2	3.5	1.9	5.5	0.8	13	4	12	60
NC-0.5-5.0	5.3	2.8	7.5	0.8	17.5	8	16	80
NC-0.5-6.3	6.6	3.4	7.5	0.8	17.5	8	16	80
NC-0.65-1.3	1.5	1.3	3.5	0.85	9	4	8	60