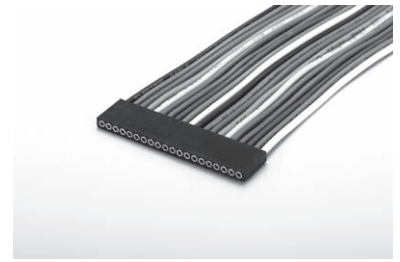


Socket for electric wire

RS series (10pcs/pack)

- This is used by fitting electric wire on one side.
- We offer the socket which is fit to electric wire.
- We can cut the housing.
- Material Housing: PBT black (UL94V-0)
Socket part Body: Brass
Contact: Beryllium copper
- Finish: Gold plating over nickel base
- Insulation resistance: 500M Ω or over
- Withstand voltage: 500V AC, DC per minute
- Operating temperature range: - 40 to + 100°C,
- 40 to + 80°C (with electric wire)
- Insertion / removal durability : 100 cycles
- Contact resistance: 10m Ω or less (per pin)



■ Example of usage



RS- □ - □ -P



RS- □ - □ -50 (color)

■ Socket Part no (10pcs/pack)

Socket Part No.	Adaptive male pin diameter	Rated current	Adaptive electric wire cover diameter	Adaptive housing	Crimping tool	Edge tool
RS-1-1-P	φ 0.3 to φ 0.45	1A	φ 0.9 or less	RS-1-1-M	OMXT-1	XRS-1
RS-3-1-P	φ 0.4 to φ 0.6	2A	φ 1.5 or less	RS-3-1-M	OMXT-1	XRS-3
RS-3-2-P	φ 0.7 to φ 0.9	5A	φ 1.5 or less	RS-3-1-M	OMXT-1	XRS-3
RS-3-3-P	φ 0.8 to φ 1.1	10A	φ 2.0 or less	RS-3-3-M	OMXT-1	XRS-3

■ Part number for the items with electric wire socket (10pcs/pack)

Part No.	Electric wire
RS-1-1-50 (color)	With AWG28, 50 cm
RS-3-1-50 (color)	With AWG24, 50 cm
RS-3-2-50 (color)	With AWG24, 50 cm
RS-3-3-50 (color)	With AWG18, 50 cm

■ How to order

RS-3-1-50 RED

↑ Please fill in the color of electric wire.

Electric wire color: BLACK, BROWN, RED, ORANGE, YELLOW, GREEN, BLUE, PURPLE, GRAY, WHITE

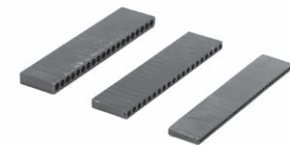
■ Housing Part No. (10pcs/pack)

Part No.	Adaptive socket
RS-1-1-M	RS-1-1-P
RS-3-1-M	RS-3-1-P, RS-3-2-P
RS-3-3-M	RS-3-3-P

■ How to order

RS-3-1-M-10P

↑ Please fill in the number of poles to use.
(RS-1-1-M: Max. 40P)
(RS-3-□-M: Max. 20P)



RS- □ - □ -M

■ Dimension

RS-1-1-P	RS-3-1-P	RS-3-2-P	RS-3-3-P	RS-1-1-M	RS-3-1-M	RS-3-3-M

