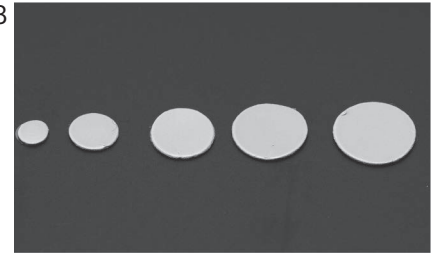


Heat dissipation gel sheet for "Netsutorimushi" CLB series

**CLS series** (100sheets/pack)

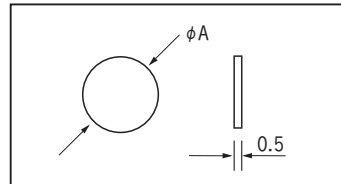
- The heat dissipation effect will be better by inserting CLS series in between CLB series, the chassis, and the radiator to eliminate the clearance.
- Material: λ Gel [λ Gel is the registered trade mark of TAICA Corporation.]
- Thickness: 0.5mm



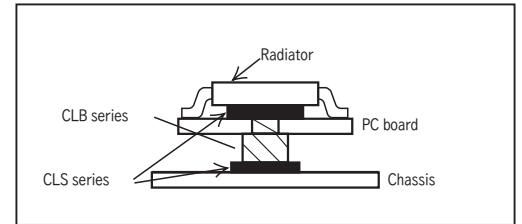
■ Part No.

Part No.	φ A
CLS-0.5-4	4
CLS-0.5-6	6
CLS-0.5-8	8
CLS-0.5-9	9
CLS-0.5-10	10

■ Dimension



■ Example of usage

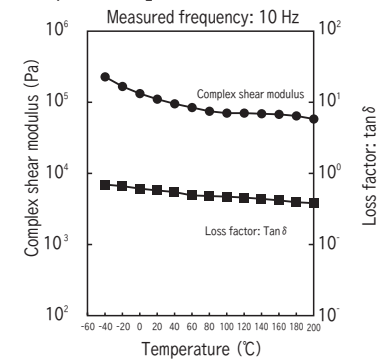


■ Properties

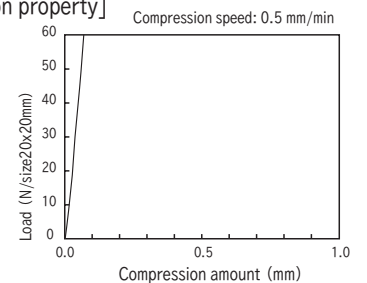
Property item		Property value	Remarks
Thermal conductivity (W/m · k)	Measurement method at TAICA Corporation	6.5	—
	Hot wire method (*1)	2.1	JIS R 2616
Hardness (penetration: 1/10 mm)		45	JIS K 2207
Appearance		Gray	—
Specific gravity		2.9	JIS K 6249
Tensile strength (MPa)		0.35	JIS K 6249
Volume resistivity (Ω · cm)		$7.1 \times 10^{13}$	JIS K 6249
Dielectric breakdown strength (kV/mm)		12.5	JIS K 6249
Elongation (%)		68	JIS K 6249
Compression permanent set (%)		72	JIS K 6249
Dielectric constant	(50Hz)	5.6	JIS K 6249
	(1 kHz)	5.0	JIS K 6249
	(1 MHz)	5.5	JIS K 6249
Dielectric loss tangent	(50Hz)	0.006	JIS K 6249
	(1 kHz)	0.002	JIS K 6249
	(1 MHz)	0.0004	JIS K 6249
Low-molecular siloxane content Σ D4-10 (ppm)	Solvent extraction method	13	—
	Head space method (*2)	0.1 or less	—
Incombustibility		V-0	UL94
Ten RoHS restriction substance		Not contained	—
Operating temperature range (°C) (*3)		- 40 to 150	—



[Temperature dependence]



[Compression property]



[Thermal resistance property]

Transistor: TO-3  
Applied voltage: 20W

Thermal resistance (°C/W)		
Compression rate: 10%	20%	30%
0.14	0.10	0.06

Hot wire method (\*1) Note1: Using the quick thermal conductivity meter of Kyoto Electronics Manufacturing Co., Ltd., QTM-500

Head space method (\*2) Note2: Measured at 70°C at Panasonic Electric Works Analysis Center Co., Ltd

Operating temperature range (\*3) Note3: This is judged by the values measured for thermal conductivity and the hardness variations and it is not the guaranteed value. Please confirm the durability under the actual use conditions.