

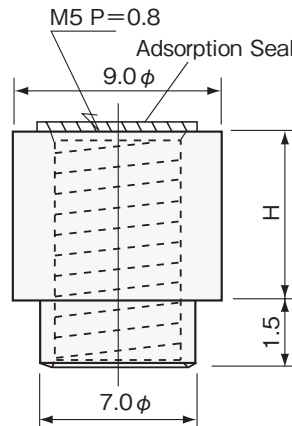
Threaded Spacer/TH-1.6-□-M5 Series



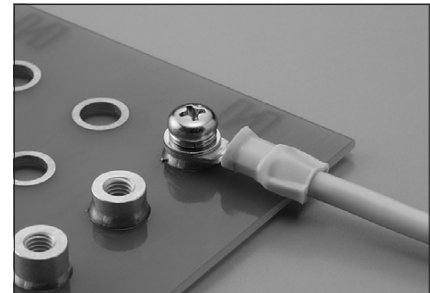
- This spacer is through hole mounted to the PCB.
Screws can be inserted from both the component and solder side.
Taped parts have an adsorption seal for vacuum pick.
It needs to be removed after reflow.

- Adaptive PCB Thickness...1.6t and over
(other PCB thickness applicable)
*Mounter should have automatic recognition system

- Material : Brass
- Finish : Sn Plating over Ni
- Current Capacity : 50A
- Tightening Torque :
15kgf-cm (147N-cm) and below

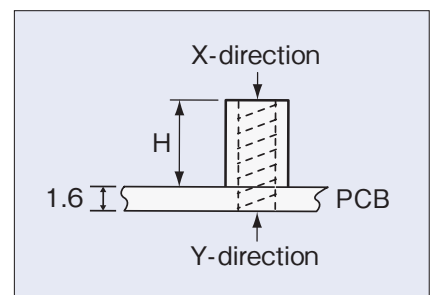


■ Usage example

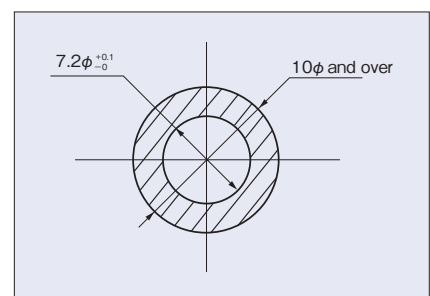


■ P/N

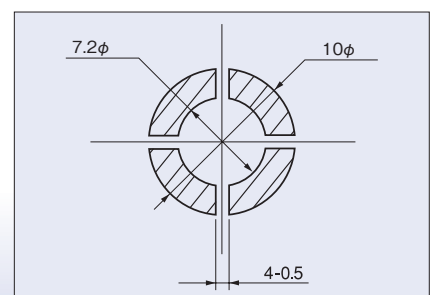
P/N	H	Package
TH-1.6-2.0-M5	2.0	500
TH-1.6-2.5-M5	2.5	400
TH-1.6-3.0-M5	3.0	400
TH-1.6-3.5-M5	3.5	350
TH-1.6-4.0-M5	4.0	350
TH-1.6-4.5-M5	4.5	300
TH-1.6-5.0-M5	5.0	300
TH-1.6-5.5-M5	5.5	250
TH-1.6-6.0-M5	6.0	250
TH-1.6-6.5-M5	6.5	200
TH-1.6-7.0-M5	7.0	200
TH-1.6-7.5-M5	7.5	200
TH-1.6-8.0-M5	8.0	200
TH-1.6-8.5-M5	8.5	150
TH-1.6-9.0-M5	9.0	150
TH-1.6-9.5-M5	9.5	150
TH-1.6-10-M5	10.0	150



■ Recommended Land Pad



■ Recommended Metal Mask



(Recommended Metal Mask Thickness: 150~200μ)

※ For Through Hole PCB only
You can order bulk type (no adsorption seal)
TH-1.6-3.0-M5-B
add-B for bulk type (100/package)



No.1 distributor of MAC8

SHINDENKIZAI Co., LTD.

Contact
e-mail: info@mac8japan.com FAX: +81-3-3253-5965

<http://www.mac8japan.com>